

STC500

NEW

DETACHER, STANDARD MAGNETIC BLACK, MADE IN USA

Low cost surface mounted magnetic detacher designed to remove all industry standard tags and ink tag clutches. Made of solid aluminum with black hard coat finish. Includes mounting hardware.



STC511

NEW

DETACHER, MAGNETIC, HAND HELD, WITH BLACK LANYARD

Hand held magnetic detacher designed to remove all industry standard tags and ink tag clutches. Made of high quality materials with black plastic hand grip, and 30" lanyard for securing to a sales counter. Dimensions 1.25" O.D. x 4' long.



STC511-R

NEW

DETACHER MAGNETIC HAND WITH 10' RETRACTABLE CABLE

SenTech's innovative retractor has a heavy gauge plastic coated steel cable that securely attaches the tag detacher to the point of sale counter. It allows the detacher to be pulled out up to ten feet away from its mounting point to easily remove tags from large items that cannot be put on the checkout counter such as barbeque grills, generators, pressure washers, tools etc. Detacher cable automatically retracts back into its housing when not in use. This version comes complete with SenTech's Magnetic Hand Detacher as shown.



STC517

NEW

DETACHER, MAGNETIC SUPERLOCK

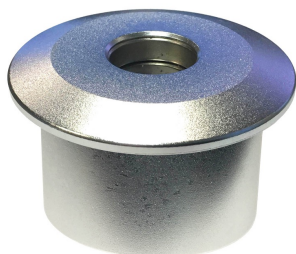
The SenTech Super-Lock Magnetic detacher is used to open the any magnetic release RF or AM tags. Uses multiple extremely powerful rare earth magnets designed to re lease magnetic super-locks.

Detacher may be securely surface mounted with supplied hardware.

**STC518***NEW***DETACHER, DOME, MAGNETIC SUPERLOCK, 12,000 GAUSS**

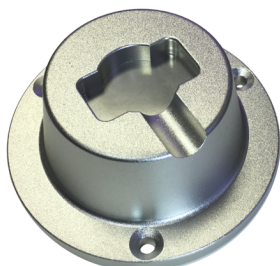
The SenTech Super-Lock Magnetic detacher is used to open the any magnetic release RF or AM tags. Uses multiple extremely powerful rare earth magnets designed to release magnetic super-locks.

Detacher may be securely surface mounted with supplied hardware.

**STC519***NEW***DETACHER, RECESSED IN-COUNTER MOUNT, SUPER LOCK**

The SenTech Super-Lock Magnetic detacher is used to open the any magnetic release RF or AM tags. Uses multiple extremely powerful rare earth magnets designed to release magnetic super-locks.

Detacher designed for Sink-In counter application.

**STC522***NEW***DETACHER, SURFACE MOUNT, SUPER LOCK, 3.5" (89 MM) DIA.**

The SenTech Super-Lock Magnetic detacher is used to open the any magnetic release RF or AM tags. Uses multiple extremely powerful rare earth magnets designed to release magnetic super-locks. The detacher does not include a lock.

**STC525***NEW***DETACHER, MAGNETIC SUPER LOCK, WITH COILED LANYARD**

The SenTech Super-Lock Magnetic detacher is used to open the any magnetic release RF or AM tags. Uses an extremely powerful rare earth magnet designed to release magnetic super-locks.

Detacher features a coiled lanyard (stretches to 48", with a heavy duty crimp lug for attaching to a sales counter, with sheet metal screw and flat washer. The Detacher does not include a lock or mounting base.

**STC526***NEW***DETACHER, MAGNETIC SUPER, HAND HELD, W/ LANYARD**

The SenTech Super-Lock Magnetic detacher is used to open the any magnetic release RF or AM tags. Uses an extremely powerful rare earth magnet designed to release magnetic super-locks. Detacher features a coiled lanyard (stretches to 48", with a heavy duty crimp lug for attaching to a sales counter, with sheet metal screw and flat washer. The Detacher does not include a lock or mounting base.

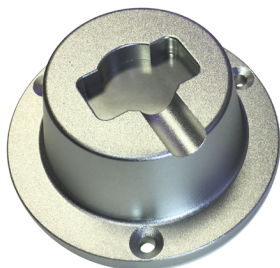
**STC527***NEW***DETACHER, RECESSED IN COUNTER MOUNT, SUPER LOCK, 12,500 GS,**

The SenTech Super-Lock Magnetic detacher is used to open the any magnetic release RF or AM tags. Uses multiple extremely powerful rare earth magnets designed to release magnetic super-locks.

Detacher designed for recessed in counter application. The detacher can also be surface mounted with the hardware included.

**STC528***NEW***DETACHER, DUAL SUPER LOCK, WITH LANYARD**

The SenTech Super-Lock Magnetic detacher is used to open the any magnetic release RF or AM tags. Uses multiple extremely powerful rare earth magnets designed to release magnetic super-locks.

**STC529***NEW***DETACHER, *SURFACE MOUNT*, SUPER LOCK, 3.5" (89 MM) DIA. 12,500 GS, MAGNET**

The SenTech Super-Lock Magnetic detacher is used to open the any magnetic release RF or AM tags. Uses multiple extremely powerful rare earth magnets designed to release magnetic super-locks. The detacher does not include a lock.



STC310

NEW

DETACHER, LOCK & KEY

SenTech detacher lock prevents unauthorized removal of tags. It is securely held in place by the magnetic field of the detacher and can be easily removed by a special key.

The lock kit includes a lock, key and a colored wristband key chain.



STC540

NEW

DETACHER HAND, SENTECH W/ BLACK 3' LANYARD

SenTech Hand Detacher (non-power) removes SenTech's UltraTag® and all standard Sensormatic® Alligator®, MicroGator®, UltraGator® and MicroClamp tags.

- Improved design requires up to 40 percent less force than other detachers.
- Easily removes tags that are damaged or difficult to detach.



STC540-R

NEW

DETACHER HAND, WITH 10' RETRACTABLE CABLE

SenTech's innovative retractor has a heavy gauge plastic coated steel cable that securely attaches the tag detacher to the point of sale counter. It allows the detacher to be pulled out up to ten feet away from its mounting point to easily remove tags from large items that cannot be put on the checkout counter such as barbeque grills, generators, pressure washers, tools etc. Detacher cable automatically retracts back into its housing when not in use. This version comes complete with SenTech's Hand Detacher as shown.



MK225

NEW & REFURB

DETACHER, HAND NON POWER, SUPERTAG #AMD-3040

Hand operated (non power) detacher. Removes all Sensormatic® SuperTags®.

STC831

NEW

DECODER & MAGNETIC DETACHER



IR Decoder and magnetic Detacher for use with the STC8XX series alarming Tethers. Features a magnet for removing the lanyard or retractor mechanism at display rack and a IR beam for disabling the alarm feature on the tethers. Uses one replaceable CR1620 battery.