



## STC662

NEW

### DEACTIVATOR, 8.2 MHZ. W/ PAD AND PWR SUPPLY, 120V

SenTech's High Performance RF label deactivator will deactivate any deactivatable 8.2 MHz RF labels up to 12 inches from deactivation antenna. Has four different modes of operation. Includes power supply and deactivation pad.

- 1 - Audible Beep before deactivation
- 2 - High Power - beeps only if label is not deactivated
- 3 - High Power - no beep



## STC662-C

NEW

### DEACTIVATOR, 8.2 MHZ. W/ PWR SUPPLY, NO PAD, 120V

SenTech's High Performance RF label deactivator will deactivate any deactivatable 8.2 MHz RF labels up to 12 inches from deactivation antenna. Has four different modes of operation. Includes power supply - no deactivation pad.

- 1 - Audible Beep before deactivation
- 2 - High Power - beeps only if label is not deactivated
- 3 - High Power - no beep



## STC662-P

NEW

### PAD, DEACTIVATOR, BLACK (WITH TARGET LABEL)

Antenna pad used with SenTech's High Performance RF label deactivator. This extremely durable pad is used in conjunction with SenTech's STC662 deactivator. Capable of deactivating 8.2 MHz RF labels up to 12 inches from pad. Made of solid high impact ABS plastic with non-slip rubber bottom surface.

Measures: 11.5" x 11.5" x 0.45"



## STC650

NEW

### DEACTIVATOR, SENTECH, 8.2 MHZ, 100-120 VAC, 50/60HZ

Permanently deactivates all deactivatable 8.2 MHz RF labels from any manufacturer. Solid mechanical design and proven electronics give years of maintenance free operation. Will not interfere with nearby systems or other deactivators. Provides audible beep if labels are not deactivated. Operates on 100-120 VAC 50/60 Hz. Easy installation, just place on the counter in a suitable location near the point of sale and plug it in.



## **STC651**

**NEW**

### **DEACTIVATOR, SENTECH, 8.2 MHZ, 220-250 VAC 50/60 HZ**

Permanently deactivates all deactivatable 8.2 MHz RF labels from any manufacturer. Solid mechanical design and proven electronics give years of maintenance free operation. Will not interfere with nearby systems or other deactivators. Provides audible beep if labels are not deactivated. Operates on 220-250 VAC 50/60 Hz. Easy installation, just place on the counter in a suitable location near the point of sale and plug it in.



## **STC660**

**NEW**

### **DEACTIVATOR, SENTECH, 8.2 MHZ, "ALL IN ONE" 120 VAC**

"All in One" High Performance RF label deactivator. The electronics of the unit are housed inside the pad eliminating external wiring from the electronics to the pad. Simple **Plug-n-Play** installation. No tuning or expert installation required. Will permanently deactivate any deactivatable 8.2 MHz RF labels up to 12 inches from antenna. Operates on 120 VAC, 60 Hz

Four standard modes of operation.



## **STC660-P1**

**NEW**

### **DEACTIVATOR, PACKAGE, 8.2 MHZ, W/ UNDER CTR MOUNT**

"All in One" High Performance RF label deactivator. The electronics of the unit are housed inside the pad eliminating external wiring from the electronics to the pad. Simple **Plug-n-Play** installation. No tuning or expert installation required. Will permanently deactivate any deactivatable 8.2 MHz RF labels up to 12 inches from antenna. Operates on 120 VAC, 60 Hz

Four standard modes of operation.



## **STC661**

**NEW**

### **DEACTIVATOR, SENTECH, 8.2 MHZ, "ALL IN ONE" 230 VAC**

"All in One" High Performance RF label deactivator. The electronics of the unit are housed inside the pad eliminating external wiring from the electronics to the pad. Simple **Plug-n-Play** installation. No tuning or expert installation required. Will permanently deactivate any deactivatable 8.2 MHz RF labels up to 12 inches from antenna. Operates on 230 VAC, 60 Hz

Four standard modes of operation.



## **STC655**

*NEW*

### **DEACTIVATOR UNDER COUNTER MOUNT, ALUMINUM**

The under counter mount is used to easily install the following SenTech RF label deactivators under a non-metallic counter. Includes all necessary mounting hardware.

Only used with STC650, STC651, STC660



## **STC580**

*NEW*

### **DEACTIVATOR, AM 58 KHZ, TABLETOP / FLUSH MNT, 120 VAC, REV. 2**

The SenTech Acousto-Magnetic Deactivator is compatible with all 58 KHz AM labels and systems. Compact design allows recessed or desktop installation. Deactivation height up to 4 inches (10cm). Internal audio and visible alarm/deactivation indicators. Detects deactivates and confirms deactivation.

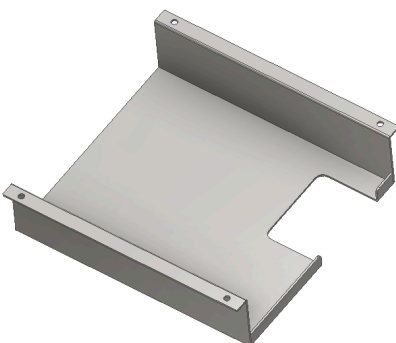


## **STC580-RA**

*NEW*

### **REMOTE ALARM, STC580 DEACTIVATOR, REV. 2**

Remote alarm for STC580 Deactivators. Mounts in any convenient location under the cash wrap counter. Adjustable volume control allows beeper volume to be set to customer needs to overcome loud music or background noise. Installs using RJ45 CAT5 type cables inline with the deactivator power supply. Mounts with supplied Velcro or screws. Includes five foot black CAT5 cable. Dimensions: 3.2" Long x 3.0" Wide x .84" Height



## **STC580-M**

*NEW*

### **UNDER COUNTER MOUNT, REV. D**

Under counter mount for STC580 Deactivator. Includes mounting hardware



## STC580-01

NEW

### ADAPTER PLATE FOR STC580 DEACTIVATOR

Aluminum plate used with the STC580 deactivator to cover or adapt recessed cut-outs that were previously for SD580 or other larger deactivators. May be attached with VHB tape or construction adhesive.

Dimensions: 11" x 11" (27.94 x 27.94 CM)



## STC580-02

NEW

### ADAPTER PLATE, FLUSH MOUNT FOR POWERPAD, INCLUDES VHB MOUNTING TAPE KIT. REV. A

Metal plate used with the STC580 deactivator to cover or adapt recessed cut-outs that were previously for PowerPad deactivators. May be attached with VHB tape or construction adhesive.

Dimensions: 18" x 9" (45.72 x 22.86 CM)



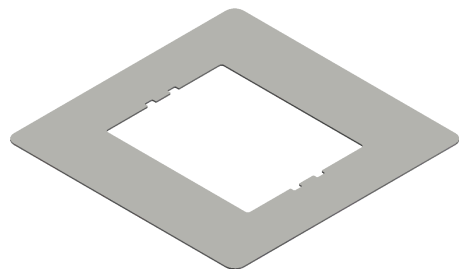
## SC580

NEW

### DEACTIVATOR, 58 KHZ AM, 120 VAC

The SenTech Acousto-Magnetic Deactivator is compatible with all 58 KHz AM labels and systems. Compact design allows recessed or desktop installation. Deactivation height up to 4 inches (10cm). Internal audio and visible alarm/deactivation indicators. Detects deactivates and confirms deactivation. Tuneable via laptop.

Dimensions: 11.02" x 9.45" x 2.56"



## STC580-03

NEW

### ADAPTER PLATE FOR RAPID PAD, STAINLESS, REV. A

Metal plate used with the STC580 deactivator to cover or adapt recessed cut-outs that were previously for Rapid Pad deactivators. May be attached with VHB tape or construction adhesive.

Dimensions: 15 x 15" (38.1 x 38.1 CM)



## **SC582**

*NEW*

### **DEACTIVATOR, 58 KHZ AM, 120 VAC, HD PAD**

The SenTech Acousto-Magnetic Deactivator is compatible with all 58 KHz AM labels and systems. Ruggedized Heavy Duty pad and compact design allows recessed or desktop installation. Deactivation height up to 4 inches (10cm). Internal audio and visible alarm/deactivation indicators. Detects deactivates and confirms deactivation. Tuneable via laptop.

Dimensions: 11.02" x 9.45" x 2.56"



## **STC670**

*NEW*

### **DEACTIVATOR PAD, MAGNETIC 4" X 6"**

Permanently deactivates upon contact all deactivatable Acousto-Magnetic (AM) labels. Includes a printed warning against placing credit cards on deactivator surface and adhesive backing for easy installation.