



## STC5800-TX

### PED, TRANSCEIVER, 58 KHZ AM, G2 PLEXI

The SenTech 58 kHz Acousto-Magnetic Transceiver will protect openings up to 6 feet (1.83m) using standard AM tags and Labels. Additional receivers and or transceivers may be added to expand coverage. It's fully programmable utilizing advanced circuitry and software. Standard features include internal audio and bi-directional people counter with analytical data output, remote diagnostics and tuning capability via TCP/IP.



Specifications subject to change without notice

2843 Center Port Circle, Pompano Beach, Florida 33064 USA  
Toll Free: 800-331-4675 • Direct: 954-426-2965 • Fax: 954-426-8389  
[www.sentecheas.com](http://www.sentecheas.com)



## STC5800-RV

### PED, RECEIVER, 58 KHZ AM, G2 PLEXI

The SenTech 58 kHz Acousto-Magnetic Receiver Antenna is used in conjunction with a transceiver antenna expanding the detection range of the system allowing it to cover wider openings. It is fully programable utilizing advanced circuitry and software. The features include bi-directional people counter with analytical data output, remote diagnostics and tuning capability via TCP/IP.

Requires a Transceiver Antenna STC5800-TX.



Specifications subject to change without notice

2843 Center Port Circle, Pompano Beach, Florida 33064 USA  
Toll Free: 800-331-4675 • Direct: 954-426-2965 • Fax: 954-426-8389  
[www.sentecheas.com](http://www.sentecheas.com)





## STC5820-TX

### DOOR ANTENNA, TRANSCEIVER, G2, 58 KHZ AM

The SenTech 58 kHz Acousto-Magnetic door frame mounted transceiver antenna will protect openings up to 6 feet (1.83m) using standard AM tags and Labels. Additional receivers and or transceivers may be added to expand coverage. It's fully programable utilizing advanced circuitry and software. Standard features include internal audio and bi-directional people counter with analytical data output, remote diagnostics and tuning capability via TCP/IP.



Door Frame Mounted



Optional Post Mount

Specifications subject to change without notice

2843 Center Port Circle, Pompano Beach, Florida 33064 USA  
Toll Free: 800-331-4675 • Direct: 954-426-2965 • Fax: 954-426-8389  
[www.sentecheas.com](http://www.sentecheas.com)



## STC5820-TXC

### DOOR ANT, TRANSCEIVER, G2, 58 KHZ AM, W/ CAMERA

The SenTech 58 kHz Acousto-Magnetic door frame mounted transceiver antenna will protect openings up to 6 feet (1.83m) using standard AM tags and Labels. Includes an internal 2 Mega Pixel high resolution IP camera. Additional receivers and or transceivers may be added to expand coverage. It's fully programable utilizing advanced circuitry and software. Standard features include internal audio and bi-directional people counter with analytical data output, remote diagnostics and tuning capability via TCP/IP.



Door Frame Mounted



Optional Post Mount

Specifications subject to change without notice

2843 Center Port Circle, Pompano Beach, Florida 33064 USA  
Toll Free: 800-331-4675 • Direct: 954-426-2965 • Fax: 954-426-8389  
[www.sentecheas.com](http://www.sentecheas.com)



## STC5820-RV

### DOOR ANTENNA, RECEIVER, G2, 58 KHZ AM

The SenTech 58 kHz Acousto-Magnetic door frame mounted receiver antenna is used in conjunction with a transceiver antenna expanding the detection range of the system allowing it to cover wider openings. It is fully programable utilizing advanced circuitry and software. The features include bi-directional people counter with analytical data output, remote diagnostics and tuning capability via TCP/IP.



Door Frame Mounted



Optional Post Mount

Specifications subject to change without notice

2843 Center Port Circle, Pompano Beach, Florida 33064 USA  
Toll Free: 800-331-4675 • Direct: 954-426-2965 • Fax: 954-426-8389  
[www.sentecheas.com](http://www.sentecheas.com)



## STC5820-RVC

### DOOR ANTENNA WITH CAMERA, RECEIVER, G2, 58 KHZ AM

The SenTech 58 kHz Acousto-Magnetic door frame mounted receiver antenna is used in conjunction with a transceiver antenna expanding the detection range of the system allowing it to cover wider openings. It is fully programable utilizing advanced circuitry and software. The features include bi-directional people counter with analytical data output, remote diagnostics and tuning capability via TCP/IP.

Includes Built in camera compatible with any NVR



Door Frame Mounted



Optional Post Mount

Specifications subject to change without notice

2843 Center Port Circle, Pompano Beach, Florida 33064 USA  
Toll Free: 800-331-4675 • Direct: 954-426-2965 • Fax: 954-426-8389  
[www.sentecheas.com](http://www.sentecheas.com)



## **SC5830-TX**

### **PED, TRANSCEIVER, 58 KHZ AM, G2 ALUMINUM FRAME WITH PLEXI INSERTS**

The SenTech G2 58 kHz Acousto-Magnetic Transceiver will protect openings up to 6 feet (1.83m) using standard AM tags and Labels. Additional receivers and or transceivers may be added to expand coverage. It's fully programable utilizing advanced circuitry and software. Standard features include internal audio and bi-directional people counter with analytical data output, remote diagnostics and tuning capability via TCP/IP

Requires a Transceiver Antenna



Specifications subject to change without notice

2843 Center Port Circle, Pompano Beach, Florida 33064 USA  
Toll Free: 800-331-4675 • Direct: 954-426-2965 • Fax: 954-426-8389  
[www.sentecheas.com](http://www.sentecheas.com)



## **SC5830-RV**

### **PED, RECEIVER, 58 KHZ AM, G2 ALUMINUM FRAME WITH PLEXI INSERTS**

The SenTech 58 kHz Acousto-Magnetic Receiver Antenna is used in conjunction with a transceiver antenna expanding the detection range of the system allowing it to cover wider openings. It is fully programable utilizing advanced circuitry and software. The features include bi-directional people counter with analytical data output, remote diagnostics and tuning capability via TCP/IP.

Requires a Transceiver Antenna



Specifications subject to change without notice

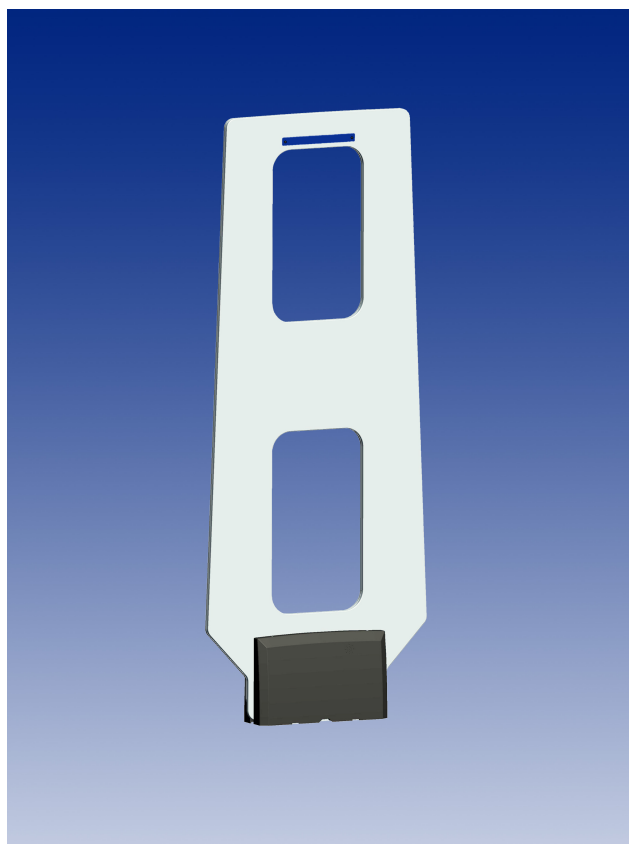
2843 Center Port Circle, Pompano Beach, Florida 33064 USA  
Toll Free: 800-331-4675 • Direct: 954-426-2965 • Fax: 954-426-8389  
[www.sentecheas.com](http://www.sentecheas.com)



## **STC5802-TX**

### **PED, TRANSCEIVER, 58 KHZ AM, G2 WIDE EXIT**

The SenTech 58 kHz Acousto-Magnetic G2 Wide Exit Transceiver will protect openings up to 8 feet (1.22m) using standard AM tags and Labels. Additional receivers and or transceivers may be added to expand coverage up to 8 feet (2.44m) between pedestals. It's fully programmable utilizing advanced circuitry and software. Standard features include internal audio and alarm lamp, bi-directional people counter, analytical data output, remote diagnostics and tuning capability.



Specifications subject to change without notice

2843 Center Port Circle, Pompano Beach, Florida 33064 USA  
Toll Free: 800-331-4675 • Direct: 954-426-2965 • Fax: 954-426-8389  
[www.sentecheas.com](http://www.sentecheas.com)

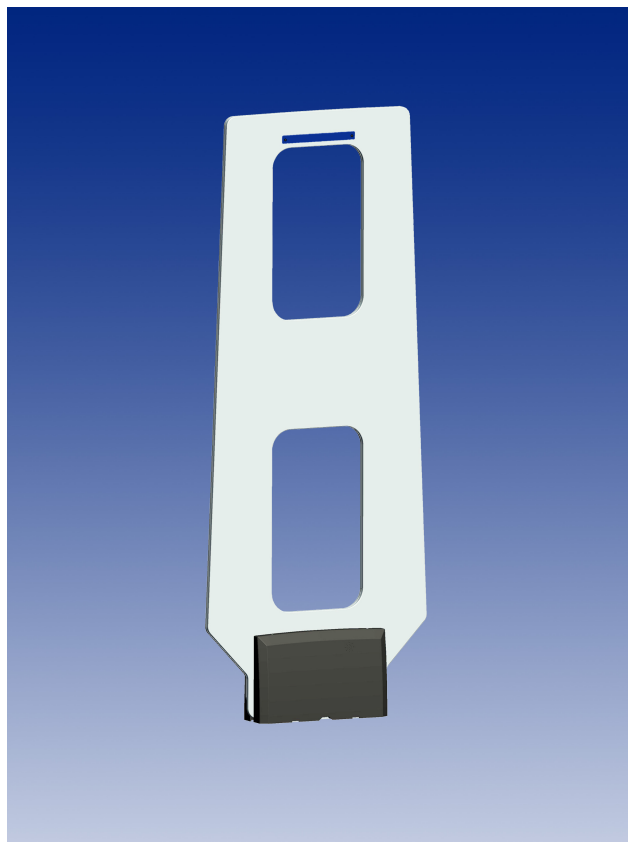




## **STC5802-RV**

### **PED, RECEIVER, 58 KHZ AM, G2 WIDE EXIT**

The SenTech 58 kHz Acousto-Magnetic G2 Wide Exit Receiver Antenna is used in conjunction with a transceiver antenna expanding the detection range of the system allowing it to cover wider openings up to 8 feet (2.44m). It is fully programable utilizing advanced circuitry and software. Standard features include alarm lamp, bi-directional people counter, analytical data output, remote diagnostics and tuning capability.



Specifications subject to change without notice

2843 Center Port Circle, Pompano Beach, Florida 33064 USA  
Toll Free: 800-331-4675 • Direct: 954-426-2965 • Fax: 954-426-8389  
[www.sentecheas.com](http://www.sentecheas.com)



## **SD5800-F**

### **FERRITE RECEIVER MODULES, G1, 58 KHZ (SET OF 2)**

SenTech 58 kHz Acousto-Magnetic Ferrite Receiver Antennas are used to expand the detection range of SenTech's AM systems. The antennas are a set of two wall or frame mounted modules that are used in conjunction with a transceiver antenna to expand the detection range of the system allowing it to cover wider openings. They are fully programable utilizing advanced circuitry and software. Includes two ferrite antenna modules.

Product Dimensions: 4.25L in x 1.5625 W x . 9.75 H



Specifications subject to change without notice

2843 Center Port Circle, Pompano Beach, Florida 33064 USA  
Toll Free: 800-331-4675 • Direct: 954-426-2965 • Fax: 954-426-8389  
[www.sentecheas.com](http://www.sentecheas.com)

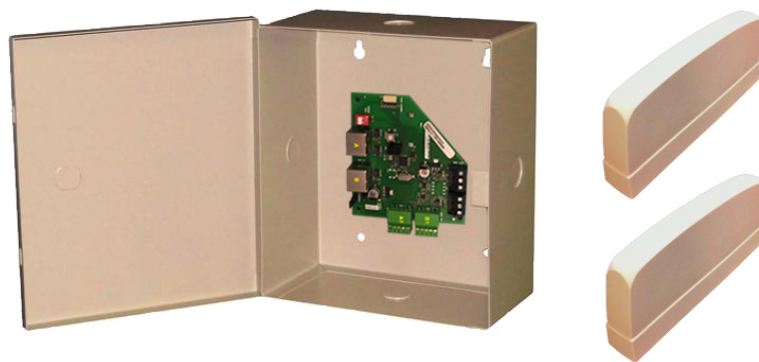


## STC5800-F

### FERRITE ANTENNA MODULES FOR AM, G2 SYSTEMS

SenTech 58 kHz Acousto-Magnetic Ferrite Receiver Antennas are used to expand the detection range of SenTech's G2 AM systems. The antennas are a set of two wall or frame mounted modules that are used in conjunction with a transceiver antenna to expand the detection range of the system allowing it to cover wider openings. They are fully programable utilizing advanced circuitry and software. Includes two ferrite antenna modules and Receiver module in a metal enclosure.

Product Dimensions: 4.25L in x 1.5625 W x . 9.75 H



Specifications subject to change without notice

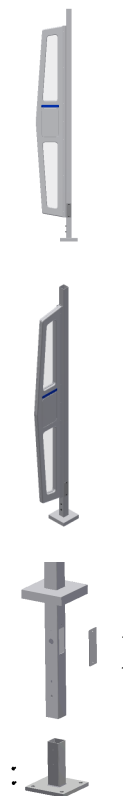
2843 Center Port Circle, Pompano Beach, Florida 33064 USA  
Toll Free: 800-331-4675 • Direct: 954-426-2965 • Fax: 954-426-8389  
[www.sentecheas.com](http://www.sentecheas.com)



## STC5820-MP

### FLOOR MOUNT POST, DOOR ANTENNA, BLACK

Door system mounting post for SenTech's and Sensormatic® AM Door antennas. Installed using floor anchors. Includes all necessary installation hardware. Color specified on order.



Specifications subject to change without notice

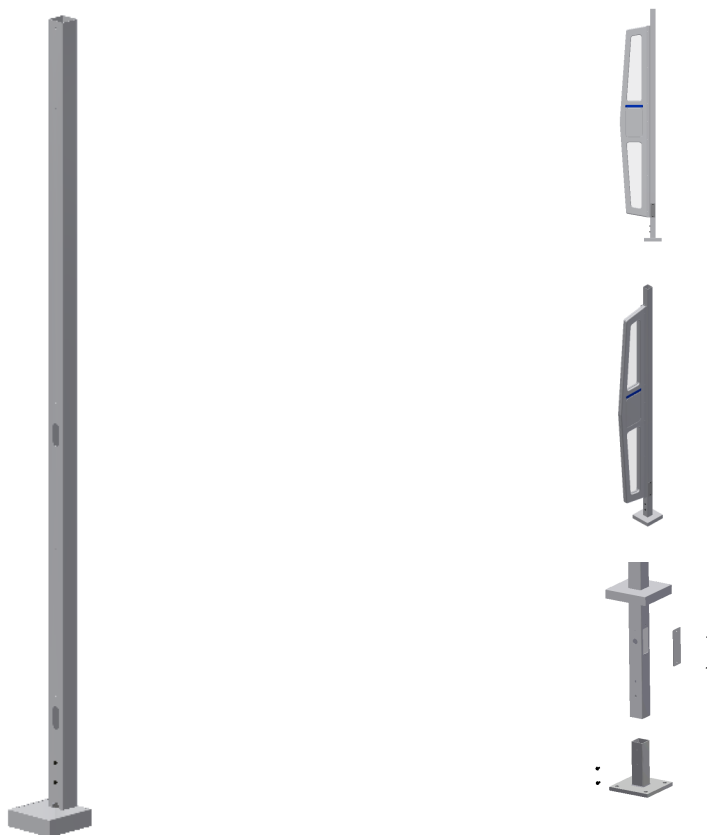
2843 Center Port Circle, Pompano Beach, Florida 33064 USA  
Toll Free: 800-331-4675 • Direct: 954-426-2965 • Fax: 954-426-8389  
[www.sentecheas.com](http://www.sentecheas.com)



## STC5820-MP-S

### FLOOR MOUNT POST, DOOR ANTENNA, SILVER

Door system mounting post for SenTech's and Sensormatic® AM Door antennas. Installed using floor anchors. Includes all necessary installation hardware. Color specified on order.



Specifications subject to change without notice

2843 Center Port Circle, Pompano Beach, Florida 33064 USA  
Toll Free: 800-331-4675 • Direct: 954-426-2965 • Fax: 954-426-8389  
[www.sentecheas.com](http://www.sentecheas.com)



## **STC5820-MPX**

### **EXTENSION KIT, FLOOR MOUNT POST, DOOR ANT, BLACK**

Door system mounting post for SenTech's and Sensormatic® AM Door antennas. Installed using floor anchors. Includes all necessary installation hardware. Color specified on order.



Specifications subject to change without notice

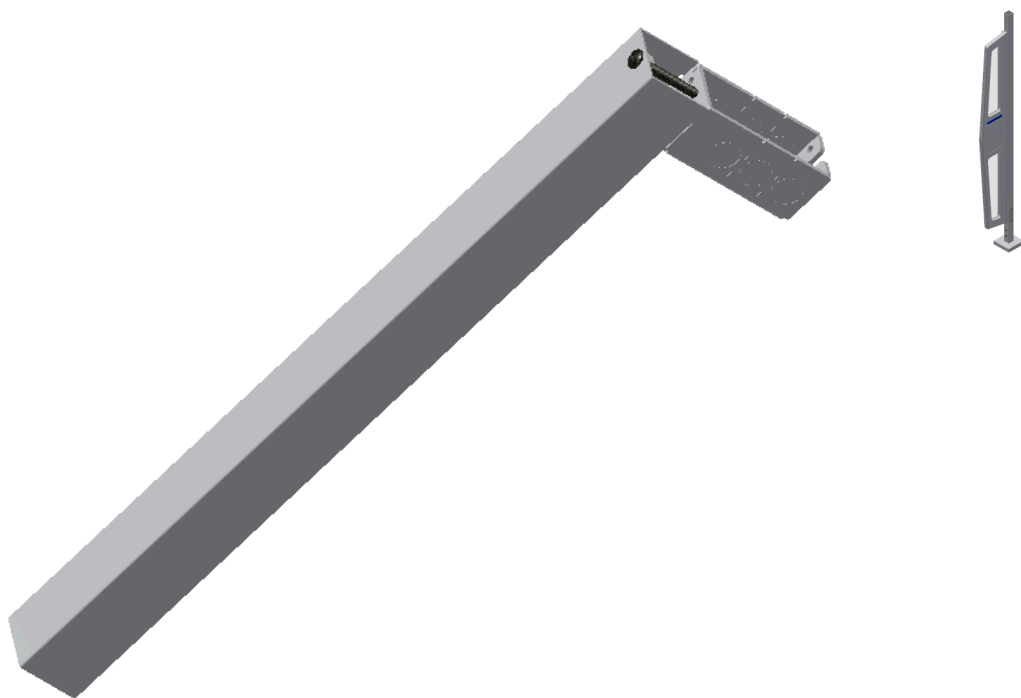
2843 Center Port Circle, Pompano Beach, Florida 33064 USA  
Toll Free: 800-331-4675 • Direct: 954-426-2965 • Fax: 954-426-8389  
[www.sentecheas.com](http://www.sentecheas.com)



## STC5820-MPX-S

**EXTENSION KIT, FLOOR MOUNT POST, DOOR ANT, SILVER**

Door system mounting post for SenTech's and Sensormatic® AM Door antennas. Installed using floor anchors. Includes all necessary installation hardware. Color specified on order.



Specifications subject to change without notice

2843 Center Port Circle, Pompano Beach, Florida 33064 USA  
Toll Free: 800-331-4675 • Direct: 954-426-2965 • Fax: 954-426-8389  
[www.sentecheas.com](http://www.sentecheas.com)



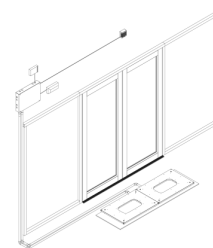
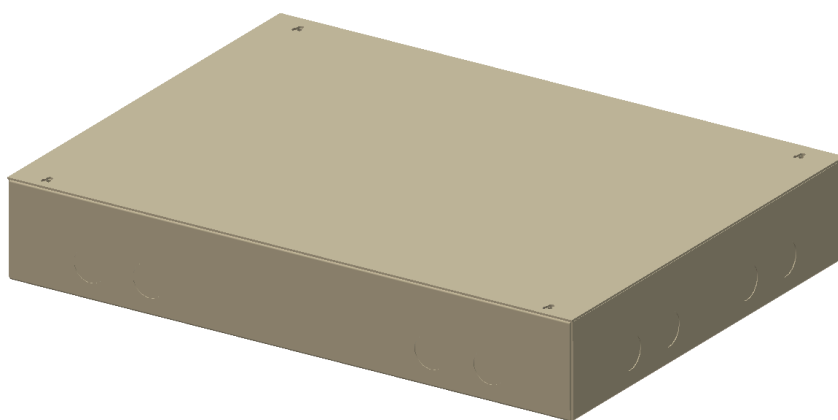


## STC5850

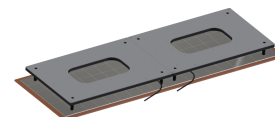
### POWER PACK, G2 58 KHZ AM, FLOOR, SINGLE OUTPUT

The SenTech 58 kHz Acousto-Magnetic In-Floor system power pack drives one set of antennas and will protect openings up to 7 feet (2.10m) using standard AM tags and Labels. Additional power packs may be added to cover wider openings. Fully programable utilizing advanced circuitry and software. Standard features include internal audio, alarm data output, remote diagnostics and tuning capability via TCP/IP.

External alarm may be required due to mounting location.



Typical Installation



Antenna

Specifications subject to change without notice

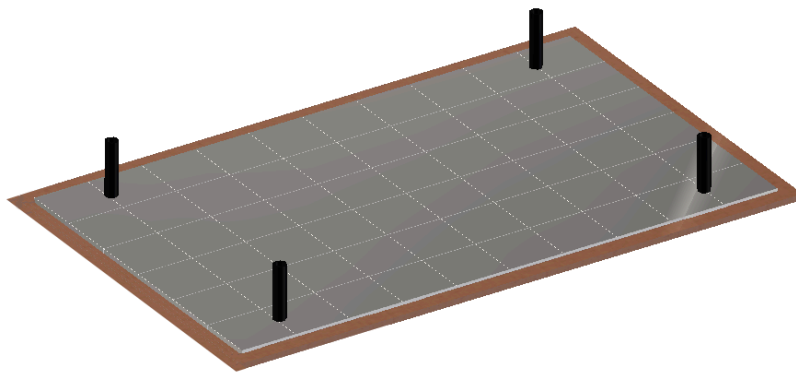
2843 Center Port Circle, Pompano Beach, Florida 33064 USA  
Toll Free: 800-331-4675 • Direct: 954-426-2965 • Fax: 954-426-8389  
[www.sentecheas.com](http://www.sentecheas.com)



## **KT120-01**

### **KIT, FLOOR ANTENNA, SINGLE LOOP ANTENNA**

Install kit includes all necessary parts to install a single in-floor antenna up to 4 feet (1.22m).



Specifications subject to change without notice

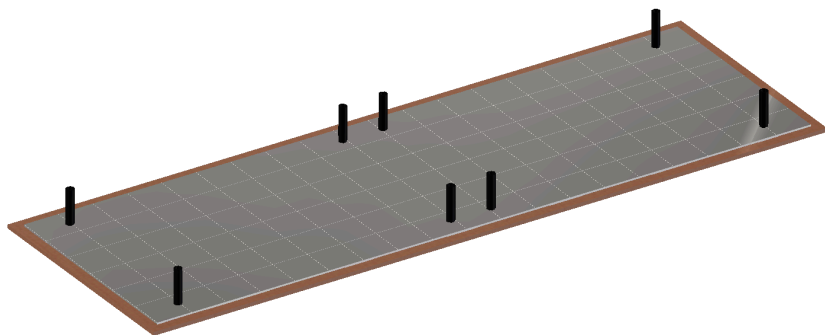
2843 Center Port Circle, Pompano Beach, Florida 33064 USA  
Toll Free: 800-331-4675 • Direct: 954-426-2965 • Fax: 954-426-8389  
[www.sentecheas.com](http://www.sentecheas.com)



## KT120-02

### KIT, FLOOR ANTENNA, DOUBLE LOOP ANTENNA

Install kit includes all necessary parts to install a single in-floor antenna up to 4 feet (1.22m).



Specifications subject to change without notice

2843 Center Port Circle, Pompano Beach, Florida 33064 USA  
Toll Free: 800-331-4675 • Direct: 954-426-2965 • Fax: 954-426-8389  
[www.sentecheas.com](http://www.sentecheas.com)

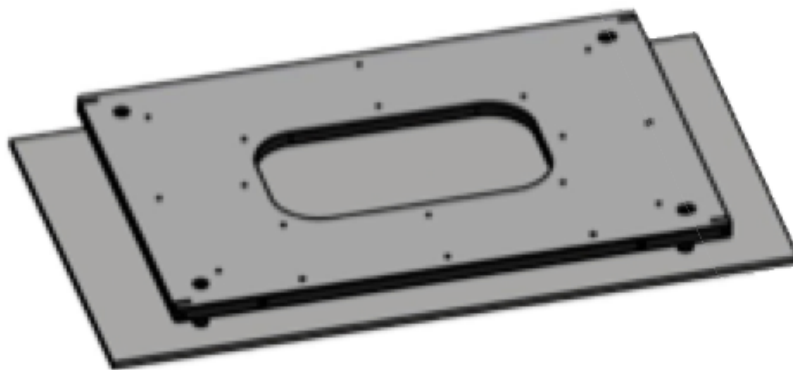


## **STC5850-01**

### **ANTENNA, G2 58 KHZ AM, SINGLE FLOOR LOOP**

The SenTech 58 kHz Acousto-Magnetic In-Floor antenna will protect openings up to 4 feet (1.22m) using standard AM tags and Labels. Additional antennas / power packs may be added to cover wider openings. Fully programable utilizing advanced circuitry and software. Requires a STC5850 Power Pack, detection height up to 5 feet with hard tags and 4 feet with DR labels. Detection may vary greatly depending upon floor construction and other environmental factors. Remote diagnostics and tuning capability via TCP/IP.

Requires KT120-01 Install kit



Specifications subject to change without notice

2843 Center Port Circle, Pompano Beach, Florida 33064 USA  
Toll Free: 800-331-4675 • Direct: 954-426-2965 • Fax: 954-426-8389  
[www.sentecheas.com](http://www.sentecheas.com)

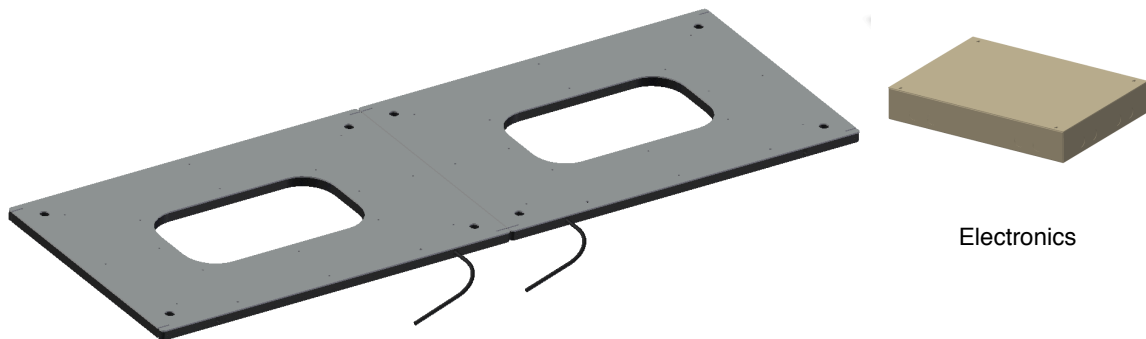


## STC5850-02

### ANTENNA, G2 58 KHZ AM, DOUBLE FLOOR LOOP

The SenTech 58 kHz Acousto-Magnetic In-Floor antenna will protect openings up to 8 feet (2.44m) using standard AM tags and Labels. Additional antennas / power packs may be added to cover wider openings. Fully programable utilizing advanced circuitry and software. Requires a STC5850 Power Pack, detection height up to 5 feet with hard tags and 4 feet with DR labels. Detection may vary greatly depending upon floor construction and other environmental factors. Remote diagnostics and tuning capability via TCP/IP.

Requires KT120-02 Install kit



Specifications subject to change without notice

2843 Center Port Circle, Pompano Beach, Florida 33064 USA  
Toll Free: 800-331-4675 • Direct: 954-426-2965 • Fax: 954-426-8389  
[www.sentecheas.com](http://www.sentecheas.com)

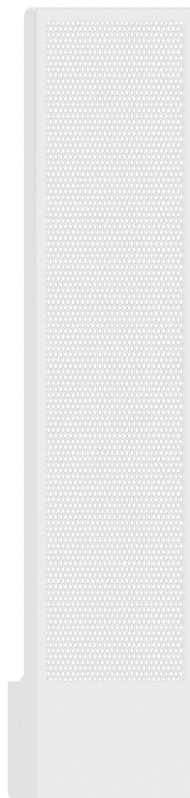


## **SHIELD-G2**

### **PEDESTAL SHIELD, G2, WHITE**

The pedestal shield is used to reduce or eliminate back field detection behind antenna. It's designed to be used with the Acrylic version of the G2 RF or AM antennas.

The shield is mounted directly on the STC926 Bumper Guard or a separate mounting bracket. Contact SenTech Technical Support for more information.



Specifications subject to change without notice

2843 Center Port Circle, Pompano Beach, Florida 33064 USA  
Toll Free: 800-331-4675 • Direct: 954-426-2965 • Fax: 954-426-8389  
[www.sentecheas.com](http://www.sentecheas.com)



## STC926

### BUMPER GUARD, G2 PLEXI

Heavy duty powder coated steel covers installed over the G1/G2 Plexi pedestal covers to protect it from damage by shopping and flat bed carts. Made from 1/8" (3.175 mm) galvanized steel. Kit includes a base bracket, two covers and all necessary installation hardware.



Specifications subject to change without notice

2843 Center Port Circle, Pompano Beach, Florida 33064 USA  
Toll Free: 800-331-4675 • Direct: 954-426-2965 • Fax: 954-426-8389  
[www.sentecheas.com](http://www.sentecheas.com)

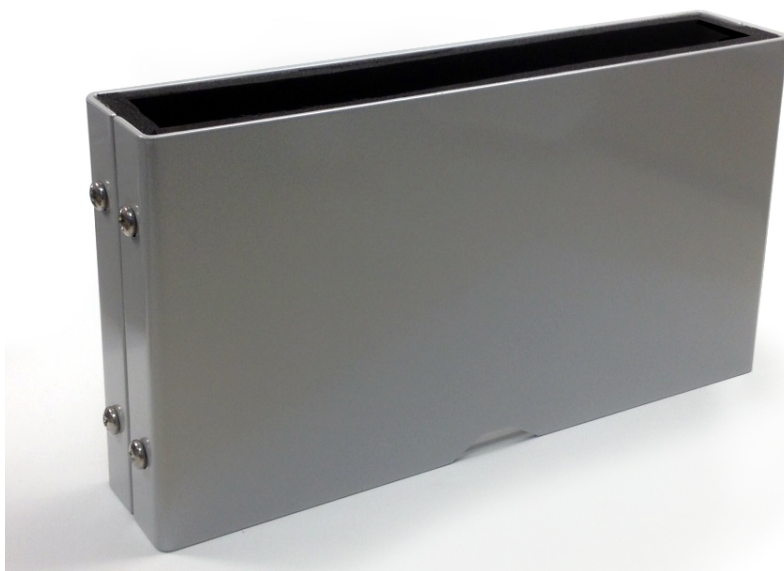




## STC927

### BUMPER GUARD, G2 AD PANEL

Heavy duty base covers installed over the G1/G2 Plexi pedestal covers to protect it from damage by shopping carts. Kit includes a base bracket, two covers and all necessary installation hardware.



Specifications subject to change without notice

2843 Center Port Circle, Pompano Beach, Florida 33064 USA  
Toll Free: 800-331-4675 • Direct: 954-426-2965 • Fax: 954-426-8389  
[www.sentecheas.com](http://www.sentecheas.com)



## STC5830-P

### POWER SUPPLY, G2 AM SYSTEMS

Heavy duty wall mountable power supply used with SenTech G2 AM systems. One power supply will power one Transceiver and up to two receiver antennas.

Input: 115VAC OR 230VAC

Output: 32.5 VDC/1.6A



Power Cord

Specifications subject to change without notice

2843 Center Port Circle, Pompano Beach, Florida 33064 USA  
Toll Free: 800-331-4675 • Direct: 954-426-2965 • Fax: 954-426-8389  
[www.sentecheas.com](http://www.sentecheas.com)



## STC911-CR

### ALARM, VOICE / TONE, DIGITAL COUNTER, IR REMOTE

SenTech's digitally synthesized alarm with digital counter provides both multilingual voice messages and tone alarms. Digital counter increments with each alarm and maintains count during power loss. All functions are set via an Infra-Red remote control. The standard alarm has multiple selectable messages or alarm tones and adjustable sound level capable of easily overcoming loud background noise or music. The alarm unit may also be custom programmed with any voice message or tone per the customer's requirements.

Compatible with most EAS systems. Operates on 12-24 Volts AC or DC power from the EAS system or supplied power adapter.



Power Adapter

Specifications subject to change without notice

2843 Center Port Circle, Pompano Beach, Florida 33064 USA  
Toll Free: 800-331-4675 • Direct: 954-426-2965 • Fax: 954-426-8389  
[www.sentecheas.com](http://www.sentecheas.com)



## STC911-R

### REMOTE, INFRA-RED FOR STC911-CR

Remote control for STC911-CR alarms. Used to reset counter, adjust volume, mute sound, select messages, tones and set auxiliary output.



Specifications subject to change without notice

2843 Center Port Circle, Pompano Beach, Florida 33064 USA  
Toll Free: 800-331-4675 • Direct: 954-426-2965 • Fax: 954-426-8389  
[www.sentecheas.com](http://www.sentecheas.com)



## STC911-C

### ALARM, VOICE / TONE, DIGITAL COUNTER

SenTech's digitally synthesized alarm with digital counter provides both multilingual voice messages and tone alarms. Digital counter increments with each alarm and maintains count during power loss. Counter may be magnetically reset. The standard alarm has multiple switch selectable messages or alarm tones and adjustable sound level capable of easily overcoming loud background noise or music. The alarm unit may also be custom programmed with any voice message or tone per the customer's requirements.

Compatible with most EAS systems. Operates on 12-24 Volts AC or DC power from the EAS system or supplied power adapter.



Power Adapter

Specifications subject to change without notice

2843 Center Port Circle, Pompano Beach, Florida 33064 USA  
Toll Free: 800-331-4675 • Direct: 954-426-2965 • Fax: 954-426-8389  
[www.sentecheas.com](http://www.sentecheas.com)



## **STC524**

### **MAGNET TELESCOPING HANDLE RESET TOOL 29.5 IN**

Magnetic telescoping wand used to magnetically reset the digital counter in SenTech's STC911-C voice tone alarms



Specifications subject to change without notice

2843 Center Port Circle, Pompano Beach, Florida 33064 USA  
Toll Free: 800-331-4675 • Direct: 954-426-2965 • Fax: 954-426-8389  
[www.sentecheas.com](http://www.sentecheas.com)



## **STC911-S**

### **ALARM SPEAKER, 4", 20 WATTS**

SenTech's voice / tone annunciator extends the capability of the Nexus allowing multiple voice or tone alarms in locations away from a single Nexus control unit.

Requires NEXUS-A1 or NEXUS-A2 for operation.



Specifications subject to change without notice

2843 Center Port Circle, Pompano Beach, Florida 33064 USA  
Toll Free: 800-331-4675 • Direct: 954-426-2965 • Fax: 954-426-8389  
[www.sentecheas.com](http://www.sentecheas.com)

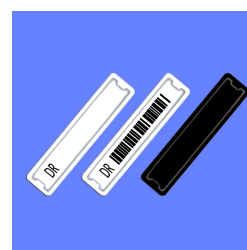




## STC580

### DEACTIVATOR, AM 58 KHZ, TABLETOP / FLUSH MNT, 120 VAC, REV. 2

The SenTech Acousto-Magnetic Deactivator is compatible with all 58 KHz AM labels and systems. Compact design allows recessed or desktop installation. Deactivation height up to 4 inches (10cm). Internal audio and visible alarm/deactivation indicators. Detects deactivates and confirms deactivation.



Deactivates AM Labels

Specifications subject to change without notice

2843 Center Port Circle, Pompano Beach, Florida 33064 USA  
Toll Free: 800-331-4675 • Direct: 954-426-2965 • Fax: 954-426-8389  
[www.sentecheas.com](http://www.sentecheas.com)



## STC580-RA

### REMOTE ALARM, STC580 DEACTIVATOR, REV. 2

Remote alarm for STC580 Deactivators. Mounts in any convenient location under the cash wrap counter. Adjustable volume control allows beeper volume to be set to customer needs to overcome loud music or background noise. Installs using RJ45 CAT5 type cables inline with the deactivator power supply. Mounts with supplied Velcro or screws. Includes five foot black CAT5 cable. Dimensions: 3.2" Long x 3.0" Wide x .84" Height

Deactivator sold separately



Used with STC580



CAT5 Cable Included



Specifications subject to change without notice

2843 Center Port Circle, Pompano Beach, Florida 33064 USA  
Toll Free: 800-331-4675 • Direct: 954-426-2965 • Fax: 954-426-8389  
[www.sentecheas.com](http://www.sentecheas.com)



## **STC580-M**

### **UNDER COUNTER MOUNT, REV. D**

Under counter mount for STC580 Deactivator. Includes mounting hardware



Specifications subject to change without notice

2843 Center Port Circle, Pompano Beach, Florida 33064 USA  
Toll Free: 800-331-4675 • Direct: 954-426-2965 • Fax: 954-426-8389  
[www.sentecheas.com](http://www.sentecheas.com)

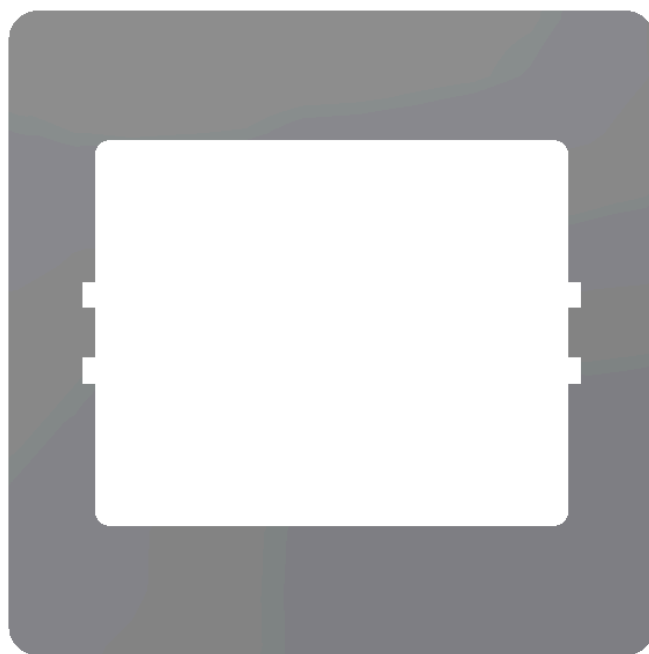


## **STC580-01**

### **ADAPTER PLATE INSTALLATION KIT FOR STC580 DEACTIVATOR**

Metal plate used with the STC580 deactivator to cover or adapt recessed cut-outs that were previously for larger deactivators. May be attached with VHB tape or construction adhesive.

Dimensions: 11" x 11" (27.94 x 27.94 CM)



Specifications subject to change without notice

2843 Center Port Circle, Pompano Beach, Florida 33064 USA  
Toll Free: 800-331-4675 • Direct: 954-426-2965 • Fax: 954-426-8389  
[www.sentecheas.com](http://www.sentecheas.com)

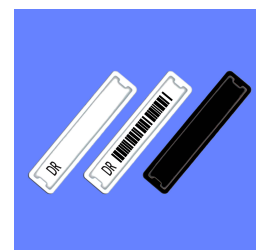


## SC580

### DEACTIVATOR, 58 KHZ AM, 120 VAC

The SenTech Acousto-Magnetic Deactivator is compatible with all 58 KHz AM labels and systems. Compact design allows recessed or desktop installation. Deactivation height up to 4 inches (10cm). Internal audio and visible alarm/deactivation indicators. Detects deactivates and confirms deactivation. Tuneable via laptop.

Dimensions: 11.02" x 9.45" x 2.56"



Deactivates AM Labels

Specifications subject to change without notice

2843 Center Port Circle, Pompano Beach, Florida 33064 USA  
Toll Free: 800-331-4675 • Direct: 954-426-2965 • Fax: 954-426-8389  
[www.sentecheas.com](http://www.sentecheas.com)

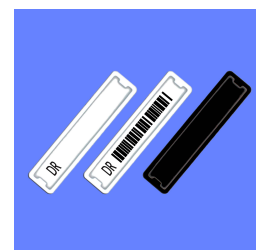


## SC582

### DEACTIVATOR, 58 KHZ AM, 120 VAC, HD PAD

The SenTech Acousto-Magnetic Deactivator is compatible with all 58 KHz AM labels and systems. Ruggedized Heavy Duty pad and compact design allows recessed or desktop installation. Deactivation height up to 4 inches (10cm). Internal audio and visible alarm/deactivation indicators. Detects deactivates and confirms deactivation. Tuneable via laptop.

Dimensions: 11.02" x 9.45" x 2.56"



Deactivates AM Labels

Specifications subject to change without notice

2843 Center Port Circle, Pompano Beach, Florida 33064 USA  
Toll Free: 800-331-4675 • Direct: 954-426-2965 • Fax: 954-426-8389  
[www.sentecheas.com](http://www.sentecheas.com)



## STC670

### DEACTIVATOR PAD, MAGNETIC 4" X 6"

Permanently deactivates upon contact all deactivatable Acousto-Magnetic (AM) labels. Includes a printed warning against placing credit cards on deactivator surface and adhesive backing for easy installation.



Specifications subject to change without notice

2843 Center Port Circle, Pompano Beach, Florida 33064 USA  
Toll Free: 800-331-4675 • Direct: 954-426-2965 • Fax: 954-426-8389  
[www.sentecheas.com](http://www.sentecheas.com)



**0400-0081**

**LABEL DEACTIVATOR TARGET, REV. A**

Adhesive backed "target" label used to identify the location of hidden deactivator pads under the point of sale counter. Made from durable Lexan® plastic with permanent adhesive. 1.3" (33 mm) Diameter.



Specifications subject to change without notice

2843 Center Port Circle, Pompano Beach, Florida 33064 USA  
Toll Free: 800-331-4675 • Direct: 954-426-2965 • Fax: 954-426-8389  
[www.sentecheas.com](http://www.sentecheas.com)





## AP100

### ACCESS POINT, G2 SYSTEMS

Network access point allows remote connection to SenTech G2 EAS systems through a hardwired ethernet connection allowing access to real-time analytical data and tuning. Access point collects data from the EAS system and sends reports via email or FTP connection to a remote server. Includes 120 VAC power adapter.

Compatible with SenTech G2 systems. Requires DHCP IP or static IP address and wired ethernet connection to LAN.



4000-0100

Specifications subject to change without notice

2843 Center Port Circle, Pompano Beach, Florida 33064 USA  
Toll Free: 800-331-4675 • Direct: 954-426-2965 • Fax: 954-426-8389  
[www.sentecheas.com](http://www.sentecheas.com)



**4000-0100**

**POWER SUPPLY SWITCHING, 15 VDC, 1A, USED WITH AP100**

Plug-in power supply used for AP100. Supplies regulated 15 VDC at 1 Amp.



Specifications subject to change without notice

2843 Center Port Circle, Pompano Beach, Florida 33064 USA  
Toll Free: 800-331-4675 • Direct: 954-426-2965 • Fax: 954-426-8389  
[www.sentecheas.com](http://www.sentecheas.com)



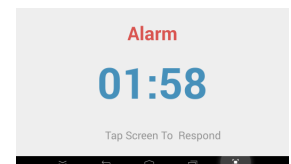
## NEXUS

### EAS ALARM EVENT MONITOR

The NEXUS touch screen system event monitor interfaces with SenTech G2 EAS systems. When an alarm occurs, the Nexus captures the alarm and reports the reason for the alarm remotely to a SenTech server that compiles reports which may be viewed or printed. In addition to alarm reasons, the Nexus also displays real-time people counts by simply touching a button on the screen. During idle periods between alarms, the Nexus can display up to ten user defined images or messages. These messages may be updated or changed remotely for individual units or all units simultaneously on a per account basis. Built-in multilingual voice and tone messages that can be played through an optional wall mounted alarm. Right and left audio alarm outputs. Network trigger from EAS systems reducing cable requirements. Built-in battery backup. Automatic power up after power failure. Unit can't be turned off without a password. Access to settings are protected by multiple password user levels including a temporary store manager (rescue) password. Easy Plug & Play replacement.

NEXUS requires an internet connection for remote reporting.

Compatible only with SenTech G2 systems



Specifications subject to change without notice

2843 Center Port Circle, Pompano Beach, Florida 33064 USA  
Toll Free: 800-331-4675 • Direct: 954-426-2965 • Fax: 954-426-8389  
[www.sentecheas.com](http://www.sentecheas.com)



## A742

### TABLET 7 INCH SENTECH #A742

SenTech 7" Android Tablet, 1024\*600, A33 Quad Core 1.3Ghz, 1GB RAM/8GB memory, 0.3 MP Camera, 2800mAh Lithium battery, 90° USB to DC cable, 90° OTG cable, US standard Power adapter. Special features include WiFi, USB ethernet with static IP, auto power up when on AC power.

Specially suited for use in kiosk operation. Kiosk wall mount available.

Retail Packaging

UPC 861611000106



Specifications subject to change without notice

2843 Center Port Circle, Pompano Beach, Florida 33064 USA  
Toll Free: 800-331-4675 • Direct: 954-426-2965 • Fax: 954-426-8389  
[www.sentecheas.com](http://www.sentecheas.com)



## REM-001

### REMOTE MAINT. / PEOPLE COUNT, 12 MTHS - PER AP100

Remote EAS system monitoring and data acquisition for SenTech G2 systems. Allows technicians to remotely tune all devices and acquire system data including real time bi-directional visitor counts and alarm counts.

Allows users to receive via email or FTP system data including real time bi-directional visitor counts and alarm counts.



Specifications subject to change without notice

2843 Center Port Circle, Pompano Beach, Florida 33064 USA  
Toll Free: 800-331-4675 • Direct: 954-426-2965 • Fax: 954-426-8389  
[www.sentecheas.com](http://www.sentecheas.com)



## REM-060

### REMOTE MAINT. / PEOPLE COUNT, 60 MTHS - PER AP100

Remote EAS system monitoring and data acquisition for SenTech G2 systems. Allows technicians to remotely tune all devices and acquire system data including real time bi-directional visitor counts and alarm counts.

Allows users to receive via email or FTP system data including real time bi-directional visitor counts and alarm counts.



Specifications subject to change without notice

2843 Center Port Circle, Pompano Beach, Florida 33064 USA  
Toll Free: 800-331-4675 • Direct: 954-426-2965 • Fax: 954-426-8389  
[www.sentecheas.com](http://www.sentecheas.com)



## REM-072

### REMOTE MAINT. / PEOPLE COUNT, 72 MTHS - PER AP100

Remote EAS system monitoring and data acquisition for SenTech G2 systems. Allows technicians to remotely tune all devices and acquire system data including real time bi-directional visitor counts and alarm counts.

Allows users to receive via email or FTP system data including real time bi-directional visitor counts and alarm counts.



Specifications subject to change without notice

2843 Center Port Circle, Pompano Beach, Florida 33064 USA  
Toll Free: 800-331-4675 • Direct: 954-426-2965 • Fax: 954-426-8389  
[www.sentecheas.com](http://www.sentecheas.com)



## REM-NEXUS

### REMOTE MAINT / REPORTING 12 MTHS - PER CONN NEXUS

Remote EAS system monitoring and data acquisition for SenTech Nexus. Allows collection and reporting to a remote server of alarm causes from EAS systems. Requires manual response from store associates.

Allows users to log in and obtain daily, weekly or monthly alarm cause reports.



Specifications subject to change without notice

2843 Center Port Circle, Pompano Beach, Florida 33064 USA  
Toll Free: 800-331-4675 • Direct: 954-426-2965 • Fax: 954-426-8389  
[www.sentecheas.com](http://www.sentecheas.com)

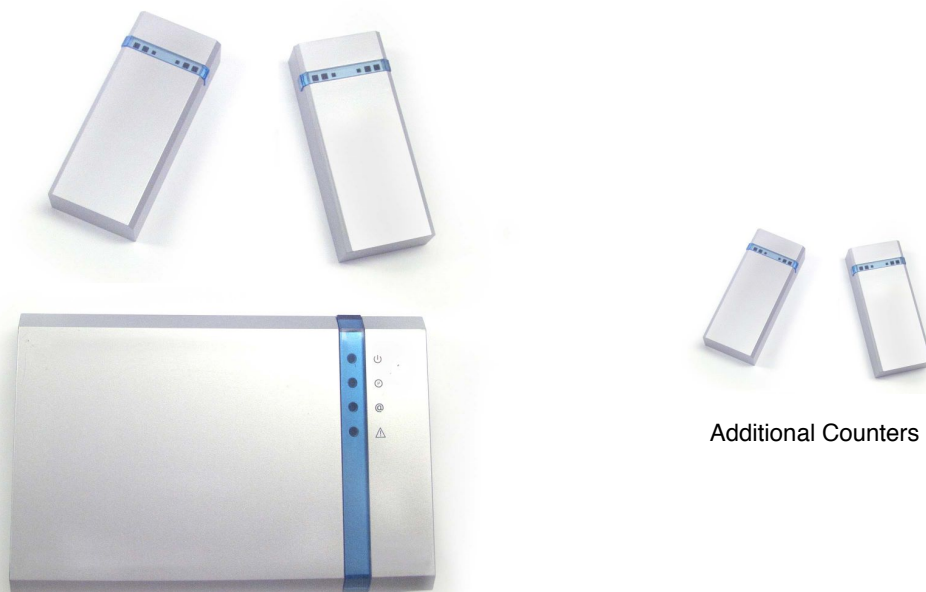




## WC-1

### WIRELESS PEOPLE COUNTER PKG, INCL. ACCESS POINT, 2 COUNTERS

Wireless people counter set with remote reporting. Kit includes two counters and an access point for internet connection. Requires a remote monitoring subscription for data reporting.



Additional Counters

Specifications subject to change without notice

2843 Center Port Circle, Pompano Beach, Florida 33064 USA  
Toll Free: 800-331-4675 • Direct: 954-426-2965 • Fax: 954-426-8389  
[www.sentecheas.com](http://www.sentecheas.com)

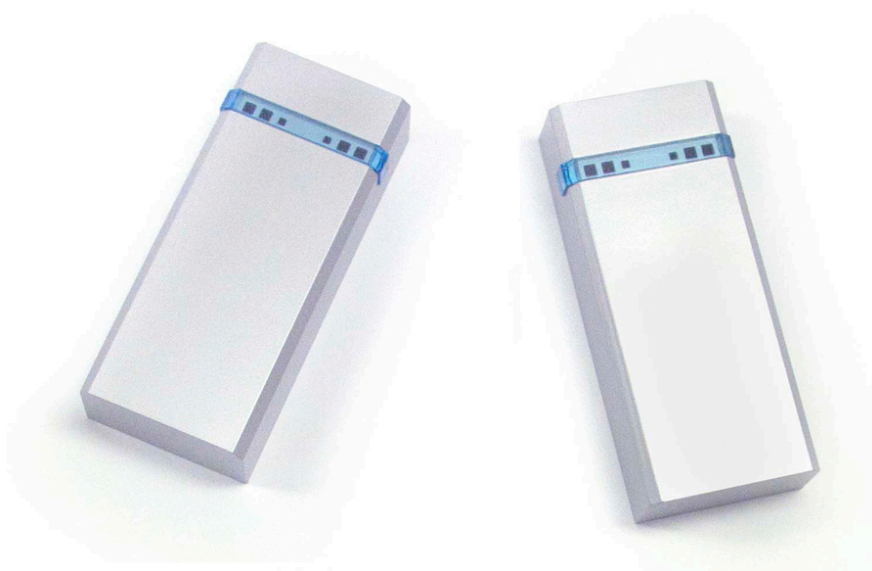


## WC

### WIRELESS PEOPLE COUNTERS, INCL. 2 COUNTERS

Wireless people counter set to add onto an existing network. Each set covers one opening. Kit includes one transmitter and one receiver unit.

Requires connection to an access point configured for UHF wireless communication. Access Point or WC-1 stand-alone people counter kit must be ordered separately.



Specifications subject to change without notice

2843 Center Port Circle, Pompano Beach, Florida 33064 USA  
Toll Free: 800-331-4675 • Direct: 954-426-2965 • Fax: 954-426-8389  
[www.sentecheas.com](http://www.sentecheas.com)



## STC2060-01

### TACK, BLACK MACRO DOT, SMOOTH SHAFT 1.75" DIA.

High Security MacroDot tack is a large in diameter 1.75" (45 mm) round dome shaped plastic head tack with hardened .75" (19 mm) smooth shaft steel pin. It is designed to interlock with the MacroDot tag making it nearly impossible to tamper with or cut. May be used with most RF hard tags that are 1.8" (46 mm) or larger in diameter.

Diameter 1.75" (45 mm)



MacroDot Tag



MacroDot Tag Bottom



Tag / Tack Interlock

Specifications subject to change without notice

2843 Center Port Circle, Pompano Beach, Florida 33064 USA  
Toll Free: 800-331-4675 • Direct: 954-426-2965 • Fax: 954-426-8389  
[www.sentecheas.com](http://www.sentecheas.com)



## **STC5810**

### **LABEL, 58 KHZ, AM, WHITE, NON-DEAC, WITH ADHESIVE**

SenTech's 58 KHz adhesive EAS labels are permanent non-deactivatable available in plain white. They may be used with any 58 KHz acousto-magnetic system. They are designed for permanent use in retail and industrial applications.

Non-Deactivatable



Specifications subject to change without notice

2843 Center Port Circle, Pompano Beach, Florida 33064 USA  
Toll Free: 800-331-4675 • Direct: 954-426-2965 • Fax: 954-426-8389  
[www.sentecheas.com](http://www.sentecheas.com)



## STC5812

**TAG, DROP-IN, AM DEAC. WT., NON-ADHESIVE, 500/BAG**

58 KHz non-adhesive drop-in EAS labels are deactivatable and offered in plain white. They may be used with any Acousto-Magnetic system and deactivators.

Barcode and black are also available - may require special order.



Specifications subject to change without notice

2843 Center Port Circle, Pompano Beach, Florida 33064 USA  
Toll Free: 800-331-4675 • Direct: 954-426-2965 • Fax: 954-426-8389  
[www.sentecheas.com](http://www.sentecheas.com)



## STC5815

### **LABEL, AM, DEACT, "ELECTRONICALLY PROTECTED"**

58 KHz AM deactivatable adhesive EAS labels are custom printed with "Electronically Protected" text. They may be used with any Acousto-Magnetic system and deactivators.



Specifications subject to change without notice

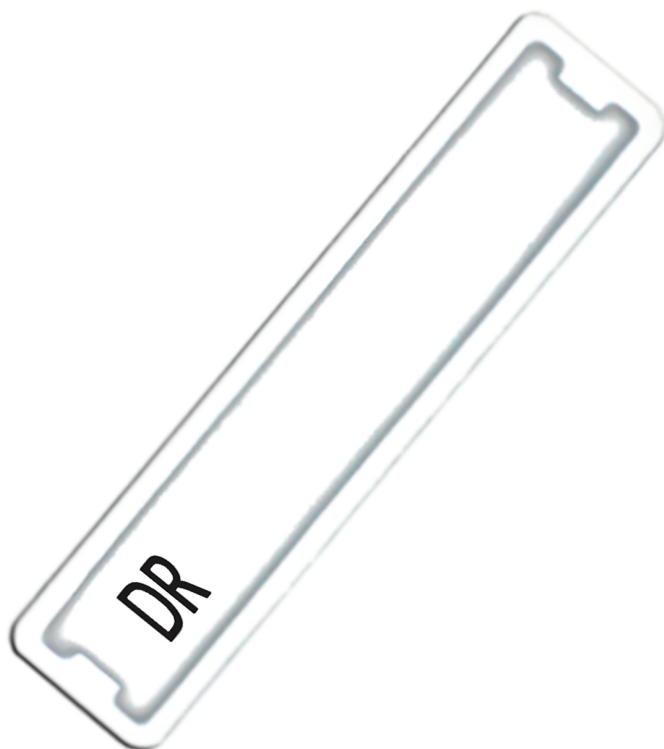
2843 Center Port Circle, Pompano Beach, Florida 33064 USA  
Toll Free: 800-331-4675 • Direct: 954-426-2965 • Fax: 954-426-8389  
[www.sentecheas.com](http://www.sentecheas.com)



## ZLDRS1

### **LABEL, WHITE, 58 KHZ. 5,000 ON SHEETS**

Adhesive 58 KHz Acousto-Magnetic deactivatable EAS labels are offered in plain white, barcode, and black. They may be used with any Acousto-Magnetic systems and deactivators.



Specifications subject to change without notice

2843 Center Port Circle, Pompano Beach, Florida 33064 USA  
Toll Free: 800-331-4675 • Direct: 954-426-2965 • Fax: 954-426-8389  
[www.sentecheas.com](http://www.sentecheas.com)



## ZLDRS2

### **LABEL, BARCODE, 58 KHZ. 5,000 ON SHEETS**

Adhesive 58 KHz Acousto-Magnetic deactivatable EAS labels are offered in plain white, barcode, and black. They may be used with any Acousto-Magnetic systems and deactivators.



Specifications subject to change without notice

2843 Center Port Circle, Pompano Beach, Florida 33064 USA  
Toll Free: 800-331-4675 • Direct: 954-426-2965 • Fax: 954-426-8389  
[www.sentecheas.com](http://www.sentecheas.com)

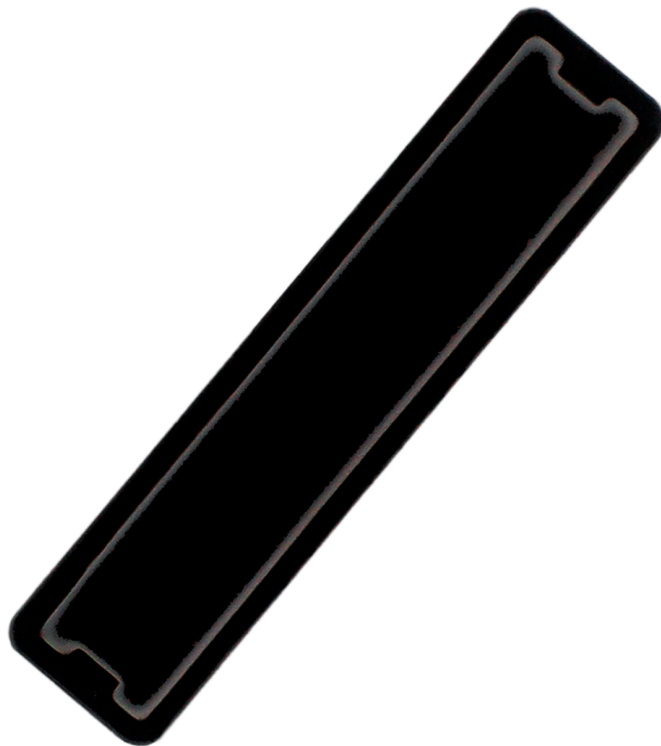




## **ZLDRS5**

**LABEL, BLACK, 58 KHZ. 5,000 ON SHEETS**

Adhesive 58 KHz Acousto-Magnetic deactivatable EAS labels are offered in plain white, barcode, and black. They may be used with any Acousto-Magnetic systems and deactivators.



Specifications subject to change without notice

**2843 Center Port Circle, Pompano Beach, Florida 33064 USA**  
**Toll Free: 800-331-4675 • Direct: 954-426-2965 • Fax: 954-426-8389**  
**[www.sentecheas.com](http://www.sentecheas.com)**



## STC1100-2

### **TAG, ULTRATAG® II, FERRITE**

SenTech UltraTag® is compatible with all Acousto-Magnetic systems and may be removed with standard Sensormatic Hand Detachers or Power Detachers, as well as the SenTech STC540 Hand Detacher.

SenTech offers new detachers.

Measures 3.25" X 1.1" (82.5 X 27.94 mm)

Weight each .416 oz. (11.8 g)



Specifications subject to change without notice

2843 Center Port Circle, Pompano Beach, Florida 33064 USA  
Toll Free: 800-331-4675 • Direct: 954-426-2965 • Fax: 954-426-8389  
[www.sentecheas.com](http://www.sentecheas.com)



## STC1100-2C

### TAG, ULTRATAG® II, FERRITE WITH TACK 1000 /BOX

SenTech UltraTag® is compatible with all Acousto-Magnetic systems and may be removed with standard Sensormatic Hand Detachers or Power Detachers. Shipped in boxes of 1000 Includes 1000 STC200X Tacks.

Measures 3.25" X 1.1" (82.5 X 27.94 mm)

Weight each .416 oz. (11.8 g)

SenTech offers new detachers.



STC200X Tacks

Specifications subject to change without notice

2843 Center Port Circle, Pompano Beach, Florida 33064 USA  
Toll Free: 800-331-4675 • Direct: 954-426-2965 • Fax: 954-426-8389  
[www.sentecheas.com](http://www.sentecheas.com)



## STC1100-3

### **TAG, ULTRATAG® III, MINI 58 KHZ, LIGHT GRAY**

SenTech UltraTag® III is extremely light weight and is compatible with all Acousto-Magnetic systems. Utilizes a high security 3 ball magnetic clutch lock. May be removed by SenTech or other standard magnetic detachers.

Super-Lock version also available.

Length 1.75" (45 mm) Weight each .25 oz. (7 g)



Specifications subject to change without notice

2843 Center Port Circle, Pompano Beach, Florida 33064 USA  
Toll Free: 800-331-4675 • Direct: 954-426-2965 • Fax: 954-426-8389  
[www.sentecheas.com](http://www.sentecheas.com)



## AMT-1000

**TAG, AM 58 KHZ, SENSORMATIC LIGHT GRAY**

The AMT-1000 tag is a small, lightweight reusable clutch hard tag made with genuine Ultra•Max resonator bias material for superb detection capability. The tag is perfect for all kinds of soft goods, especially delicates, shoes, hats, and similar merchandise. The AMT-1000 tag is compatible with standard magnetic decouplers.



MJ7400 Tack

Specifications subject to change without notice

2843 Center Port Circle, Pompano Beach, Florida 33064 USA  
Toll Free: 800-331-4675 • Direct: 954-426-2965 • Fax: 954-426-8389  
[www.sentecheas.com](http://www.sentecheas.com)



## **STC1100-3B**

### **TAG, ULTRATAG® III, MINI 58 KHZ, BLACK**

SenTech UltraTag® III is extremely light weight and is compatible with all Acousto-Magnetic systems. Utilizes a high security 3 ball magnetic clutch lock. May be removed by SenTech or other standard magnetic detachers.

Super-Lock version also available.

Length 1.75" (45 mm) Weight each .25 oz. (7 g)



Specifications subject to change without notice

2843 Center Port Circle, Pompano Beach, Florida 33064 USA  
Toll Free: 800-331-4675 • Direct: 954-426-2965 • Fax: 954-426-8389  
[www.sentecheas.com](http://www.sentecheas.com)



## STC1113

**TAG, ULTRATAG® V, WHITE, 58 KHZ. AM STANDARD LOCK**

Tag features standard magnetic lock with embedded 58 KHz.ferrite non-deactivatable tag. Compatible with all 58 KHz. AM systems. Uses any 16 mm (5/8"long) Flat Head tack.

Dimensions: L1.75" x .W50" x .H825".



Specifications subject to change without notice

2843 Center Port Circle, Pompano Beach, Florida 33064 USA  
Toll Free: 800-331-4675 • Direct: 954-426-2965 • Fax: 954-426-8389  
[www.sentecheas.com](http://www.sentecheas.com)



## STC1114

TAG, ULTRATAG® VI, GRAY, 58 KHZ, AM

ULTRATAG® VI, is compatible with all AM 58 khz. systems and is ideal for tagging jeans, shirts, jackets, shoes. May also be used with Sentech lanyards for tagging handbags, sporting goods, outdoor merchandise and tools. The tag features a standard magnetic lock for use with standard industry security tacks.

Dimensions: L 2.9" x W 1.2" x H .8"

Weight:



Specifications subject to change without notice

2843 Center Port Circle, Pompano Beach, Florida 33064 USA  
Toll Free: 800-331-4675 • Direct: 954-426-2965 • Fax: 954-426-8389  
[www.sentecheas.com](http://www.sentecheas.com)





## ZL300-GNP

### TAG, AM, SUPERTAG II GREY

Acousto-Magnetic SuperTag used with any Acousto-Magnetic Systems. May be attached to merchandise with a SuperTag tack, wire lanyards or Versa-Lanyards. May be removed only by using Sensormatic® SuperTag power detachers, or with the manual SuperTag Hand Detacher. Refurbished.



Specifications subject to change without notice

2843 Center Port Circle, Pompano Beach, Florida 33064 USA  
Toll Free: 800-331-4675 • Direct: 954-426-2965 • Fax: 954-426-8389  
[www.sentecheas.com](http://www.sentecheas.com)



## **ZL303-BNP**

### **TAG, AM, SUPERTAG III BLACK**

Acousto-Magnetic SuperTag used with any Acousto-Magnetic Systems. May be attached to merchandise with a SuperTag tack, wire lanyards or Versa-Lanyards. May be removed only by using Sensormatic® SuperTag power detachers, or with the manual SuperTag Hand Detacher.

Standard Packaging 1,000 Tags per Box



Specifications subject to change without notice

2843 Center Port Circle, Pompano Beach, Florida 33064 USA  
Toll Free: 800-331-4675 • Direct: 954-426-2965 • Fax: 954-426-8389  
[www.sentecheas.com](http://www.sentecheas.com)



## **ZL303-GNP**

### **TAG, AM, SUPERTAG III GREY**

Acousto-Magnetic SuperTag used with any Acousto-Magnetic Systems. May be attached to merchandise with a SuperTag tack, wire lanyards or Versa-Lanyards. May be removed only by using Sensormatic® SuperTag power detachers, or with the manual SuperTag Hand Detacher.

Standard Packaging 1,000 Tags per Box



Specifications subject to change without notice

2843 Center Port Circle, Pompano Beach, Florida 33064 USA  
Toll Free: 800-331-4675 • Direct: 954-426-2965 • Fax: 954-426-8389  
[www.sentecheas.com](http://www.sentecheas.com)



## SC3215

### TAG, AM, SUPERTAG COMBO AM/MW BLACK

The Combo Supertag may be used with any 58 KHz AM (Acousto-Magnetic) and or Sensormatic® 900-915 MHz Microwave Systems. Tag can be attached to merchandise with a supertag pin, or a pin with wire lanyards. This tag may only be removed using Sensormatic Supertag power detachers, or with the manual Supertag Hand Detacher.



SC3206-B Tack

Specifications subject to change without notice

2843 Center Port Circle, Pompano Beach, Florida 33064 USA  
Toll Free: 800-331-4675 • Direct: 954-426-2965 • Fax: 954-426-8389  
[www.sentecheas.com](http://www.sentecheas.com)

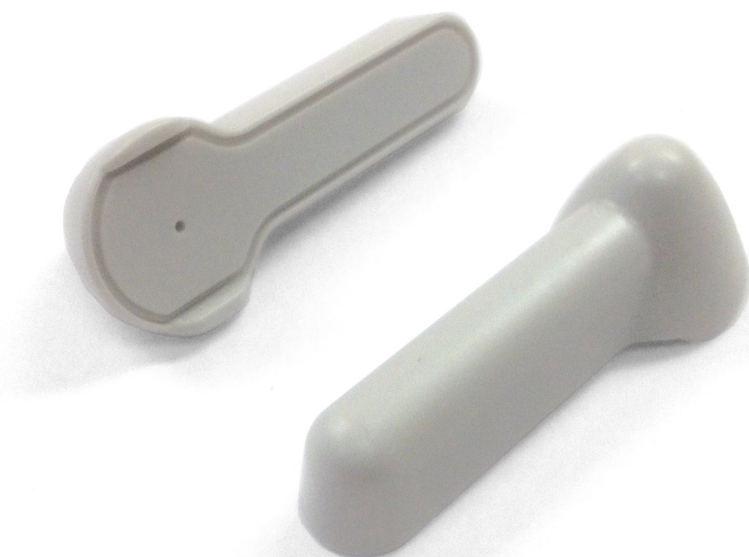


## STC1107

TAG, ULTRATAG®, **SUPER** PENCIL 58 KHZ, LIGHT GREY, STANDARD LOCK,

SenTech UltraTag® VII series features a large ferrite core for wide aisle applications, and is compatible with all Acousto-Magnetic systems. Utilizes a high security superlock magnetic clutch. Tag requires standard industry 5/8" Flat Head security tacks. May be removed by using SenTech Super lock magnetic detachers, or industry equivalent detachers.

Length 2.62" (66.5 mm) Weight each .45 oz. ( 13g)



Specifications subject to change without notice

2843 Center Port Circle, Pompano Beach, Florida 33064 USA  
Toll Free: 800-331-4675 • Direct: 954-426-2965 • Fax: 954-426-8389  
[www.sentecheas.com](http://www.sentecheas.com)



## STC1103

### **TAG, LAMINATED POUCH, WHITE, 58 KHZ AM, 500 PER BAG**

Plastic laminated pouch tag used with all 58 KHZ Acousto-Magnetic systems. Drop-in or attached with price tag fasteners or clutch locks. May be custom printed with store logo, text or colors.

Dimensions: 2.4" x 1.2" (61 x 31 mm)

Packed 500 per bag.



Internal DR Label

Specifications subject to change without notice

2843 Center Port Circle, Pompano Beach, Florida 33064 USA  
Toll Free: 800-331-4675 • Direct: 954-426-2965 • Fax: 954-426-8389  
[www.sentecheas.com](http://www.sentecheas.com)



## STC1103-BC

### **TAG, SOFT POUCH, INVENTORY CONTROL BARCODE, 58 KHZ AM, 500 PER BAG**

Plastic laminated pouch tag used with all 58 KHZ Acousto-Magnetic systems. Drop-in or attached with price tag fasteners or clutch locks. May be custom printed with store logo, text or colors.

Dimensions: 2.4" x 1.2" (61 x 31 mm)

Packed 500 per bag.



Internal DR Label

Specifications subject to change without notice

2843 Center Port Circle, Pompano Beach, Florida 33064 USA  
Toll Free: 800-331-4675 • Direct: 954-426-2965 • Fax: 954-426-8389  
[www.sentecheas.com](http://www.sentecheas.com)



## **STINGER-AM**

### **TAG, DROP-IN, 58 KHZ AM, GRAY**

The SenTech Stinger™ is a unique Drop-In or Sew-In tag, machine washable that is used to protect many types of merchandise. It may be simply dropped into a battery compartment or other similar location within a product, sewn into towels etc. Stinger tags are completely sealed and are waterproof. The tag is 1.4"X.4" (35.6X10.2 mm) which is slightly shorter than a AAA type battery. It provides very good detection in most applications even when placed in close proximity to metal. The tag may be removed from the product when sold and reused, or left in and passed around the EAS system. The Stinger™ is compatible with all AM shoplifting systems from any manufacturer.

Also available in 8.2 MHz and 9.5 MHz RF



Specifications subject to change without notice

2843 Center Port Circle, Pompano Beach, Florida 33064 USA  
Toll Free: 800-331-4675 • Direct: 954-426-2965 • Fax: 954-426-8389  
[www.sentecheas.com](http://www.sentecheas.com)



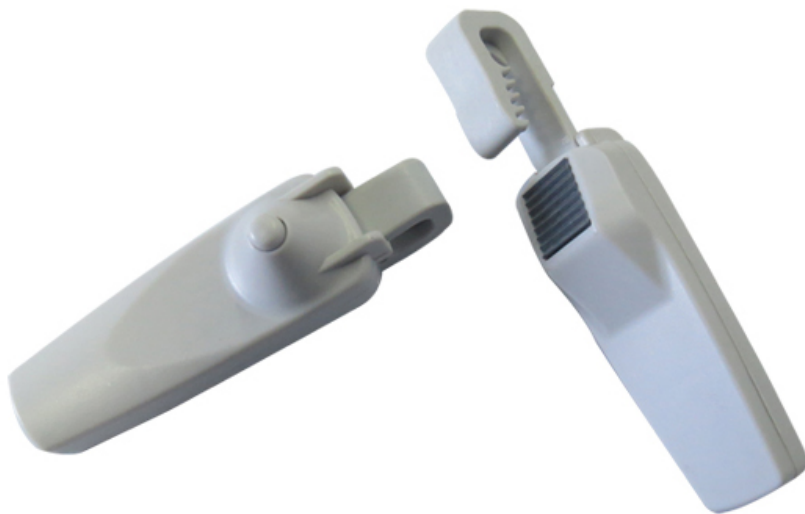


## **STC358**

### **TAG, 58 KHZ AM, PINLESS SHOE, 100 PER BAG**

Pinless tag used for shoes, handbags or other items where using a pin would cause damage to the item being protected. Securely attaches to item without the use of a pin and releases with a Super Magnetic detacher.

Requires Super Magnetic detacher



Specifications subject to change without notice

2843 Center Port Circle, Pompano Beach, Florida 33064 USA  
Toll Free: 800-331-4675 • Direct: 954-426-2965 • Fax: 954-426-8389  
[www.sentecheas.com](http://www.sentecheas.com)



## STC1407

### **TAG INK, WHITE, PRINTED, RED/YEL INK 58 KHZ, 50MM DIA**

SenTech's 2" (50mm) round 58KHz ink tag is manufactured using the highest quality materials including glass vials, and ultraviolet resistant plastic. Printed text with graphic illustrations warn against unauthorized removal. Compatible with all 58 KHz AM systems, standard smooth or grooved 5/8" security tacks and detachers.

Measures 1.975" x 0.825" (50 x 20.95 mm) uses 5/8" (16mm) pin, 1.975" (50mm) Dia.



Specifications subject to change without notice

2843 Center Port Circle, Pompano Beach, Florida 33064 USA  
Toll Free: 800-331-4675 • Direct: 954-426-2965 • Fax: 954-426-8389  
[www.sentecheas.com](http://www.sentecheas.com)



## STC1406

**TAG INK, WHITE, YELLOW & RED INK, 58 KHZ, RND 2" (50 MM) DIA.**

SenTech's 2" (50mm) round 58KHz ink tag is manufactured using the highest quality materials including glass vials, and ultraviolet resistant plastic. Printed text with graphic illustrations warn against unauthorized removal. Compatible with all 58 KHz AM systems, standard smooth or grooved 5/8" security tacks and detachers.

Measures 1.975" x 0.825" (50 x 20.95 mm) uses 5/8" (16mm) pin, 1.2" (30.48 MM) Dia.



STC1406-01

Specifications subject to change without notice

2843 Center Port Circle, Pompano Beach, Florida 33064 USA  
Toll Free: 800-331-4675 • Direct: 954-426-2965 • Fax: 954-426-8389  
[www.sentecheas.com](http://www.sentecheas.com)



## **STC1108-AM**

### **TAG, ULTRATAG®, ROTATING LANYARD, 58 KHZ, AM BLK, STD LOCK**

SenTech Ultratag Mini features a 360° 4" cable lanyard with Ferrite core tag for superior detection, and is available in both 8.2 Mhz. and 58 KHz. frequencies. This tag is excellent for tagging handbags, shoes, belts, sporting goods, tools, grills, and outdoor products.

Dimensions: L1.84"x W.92" (46.8mm 23.4mm)

Case pack 1,000 / 100 per bag - wt. 24 LBs.



Specifications subject to change without notice

2843 Center Port Circle, Pompano Beach, Florida 33064 USA  
Toll Free: 800-331-4675 • Direct: 954-426-2965 • Fax: 954-426-8389  
[www.sentecheas.com](http://www.sentecheas.com)



## STC1108-AMW

**TAG, ULTRATAG®, ROTATING LANYARD, 58 KHZ, AM *WHITE* STD LOCK**

SenTech Ultratag Mini features a 360° 4" cable lanyard with Ferrite core tag for superior detection, and is available in both 8.2 Mhz. and 58 KHz. frequencies. This tag is excellent for tagging handbags, shoes, belts, sporting goods, tools, grills, and outdoor products.

Dimensions: L1.84"x W.92" (46.8mm 23.4mm)

Case pack 1,000 / 100 per bag - wt. 24 LBs.



Specifications subject to change without notice

2843 Center Port Circle, Pompano Beach, Florida 33064 USA  
Toll Free: 800-331-4675 • Direct: 954-426-2965 • Fax: 954-426-8389  
[www.sentecheas.com](http://www.sentecheas.com)



## **STC1100-4**

### **TAG, BLACK, WITH 3" LANYARD 58 KHZ AM**

This lanyard tag is a "one piece" tag lanyard combination that saves time during application and removal. It's compatible with all 58 kHz AM systems and may be removed with standard magnetic detachers. It may be attached to items that have handles such as tools, sporting goods, luggage, handbags, sunglasses etc.

Dimensions: L1.75" x W.50" X .93" H.  
Weight 0.3 oz.



Specifications subject to change without notice

2843 Center Port Circle, Pompano Beach, Florida 33064 USA  
Toll Free: 800-331-4675 • Direct: 954-426-2965 • Fax: 954-426-8389  
[www.sentecheas.com](http://www.sentecheas.com)

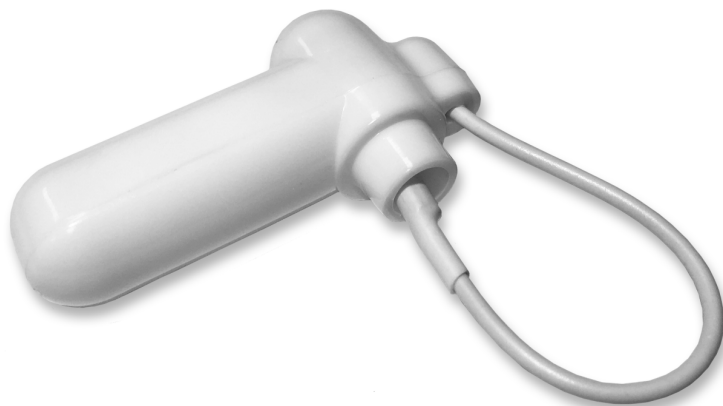


## **STC1100-4W**

**TAG, WHITE, WITH 3" LANYARD, 58 KHZ.**

This lanyard tag is a "one piece" tag lanyard combination that saves time during application and removal. It's compatible with all 58 kHz AM systems and may be removed with standard magnetic detachers. It may be attached to items that have handles such as tools, sporting goods, luggage, handbags, sunglasses etc.

Dimensions: L1.75" x W.50" X .93" H.  
Weight 0.3 oz.



Specifications subject to change without notice

2843 Center Port Circle, Pompano Beach, Florida 33064 USA  
Toll Free: 800-331-4675 • Direct: 954-426-2965 • Fax: 954-426-8389  
[www.sentecheas.com](http://www.sentecheas.com)



## STC1109

### ULTRALANYARD, 9" ONE PIECE TAG / LANYARD

SenTech's UltraLanyard is a "one piece" tag lanyard combination that saves time during application and removal. It's compatible with all Acousto-Magnetic systems and may be removed with standard hand or power detachers. Its innovative design incorporates a high security black plastic lanyard that allows adjustable diameter from 1/2" to 2.5". It may be attached to items that have handles such as tools, sporting goods, luggage, handbags, etc.

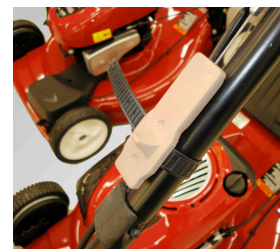
US Patent 7,595,733



Protect Sporting Goods



Protect Tools



Lawn & Garden

Specifications subject to change without notice

2843 Center Port Circle, Pompano Beach, Florida 33064 USA  
Toll Free: 800-331-4675 • Direct: 954-426-2965 • Fax: 954-426-8389  
[www.sentecheas.com](http://www.sentecheas.com)





## **STC1110-AM**

### **ULTRAGRIP, 58 KHZ AM, GREY ONE PIECE LANYARD AND TAG**

The UltraGrip is a "one piece" tag with a 5.90" (150 MM) lanyard combination that saves time during application and removal. It's compatible with all Acousto-Magnetic systems and may be removed with standard magnetic detachers. Its innovative design incorporates a high security plastic covered metal lanyard that allows adjustable diameter. It may be attached to items that have handles such as tools, sporting goods, bottles, luggage, handbags, etc.

color may be different from photo



Specifications subject to change without notice

2843 Center Port Circle, Pompano Beach, Florida 33064 USA  
Toll Free: 800-331-4675 • Direct: 954-426-2965 • Fax: 954-426-8389  
[www.sentecheas.com](http://www.sentecheas.com)



## **STC2004-AM**

**TAG, BOTTLE LOK, 58 KHZ.. BLACK, BLT58K-BK 500 CS) WITH 160 MM CLEAR LANYARD**

The Bottle Tag is made of black ABS plastic and works with any 58 KHz. AM (Acousto Magnetic) system. It has a machined brass high security lock and PVC coated steel cable. It is used to secure liquor bottles or other items that the lanyard may be pulled tight around and is removed by standard magnetic detachers.



Specifications subject to change without notice

2843 Center Port Circle, Pompano Beach, Florida 33064 USA  
Toll Free: 800-331-4675 • Direct: 954-426-2965 • Fax: 954-426-8389  
[www.sentecheas.com](http://www.sentecheas.com)

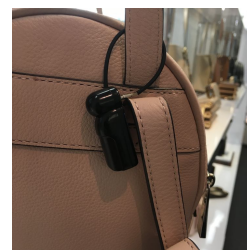


## STC1106-01

### **TAG, ULTRATAG® MINI 58 KHZ, BLACK, W/ 4" LANYARD**

SenTech UltraTag® VI series is extremely light weight and is compatible with all Acousto-Magnetic systems. Utilizes a high security magnetic clutch. Works with all SenTech and compatible 58 KHz systems and standard magnetic detachers.

Length 1.7" (43.2 mm)  
Weight each .25 oz. (7 g)



Specifications subject to change without notice

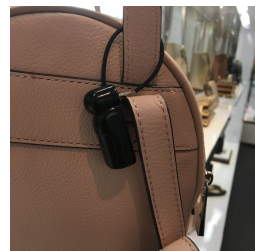
2843 Center Port Circle, Pompano Beach, Florida 33064 USA  
Toll Free: 800-331-4675 • Direct: 954-426-2965 • Fax: 954-426-8389  
[www.sentecheas.com](http://www.sentecheas.com)



## STC1106-02

SenTech UltraTag® VI series is extremely light weight and is compatible with all Acousto-Magnetic systems. Utilizes a high security magnetic clutch. Works with all SenTech and compatible 58 KHz systems and standard magnetic detachers. Available in Black, White and Grey.

Length 1.7" (43.2 mm)  
Weight each .25 oz. (7 g)



Specifications subject to change without notice

2843 Center Port Circle, Pompano Beach, Florida 33064 USA  
Toll Free: 800-331-4675 • Direct: 954-426-2965 • Fax: 954-426-8389  
[www.sentecheas.com](http://www.sentecheas.com)



## **JWNECK100ND**

### **NECKLACE JEWEL LOK BEIGE AM 100 CNT**

Protect your valuable loose jewelry from theft — JewellLok™ protects the merchandise not the packaging, reducing shrink and mark downs.

The low profile creates minimal impact to display space but provides maximum benefit denial and EAS protection.

The smallest and lightest EAS tag available

Easily applied in the store or at source

Fits on existing peg hooks and spinner racks

Low profile creates minimal impact to the amount of merchandise being displayed

Offers strong benefit denial protection – the jewelry will break before the solution fails

Hardened steel hook coated in plastic to prevent scratches – cannot be cut with scissors or nail clippers

RF or AM EAS inside the small, cylindrical tag

Also available in black



Specifications subject to change without notice

2843 Center Port Circle, Pompano Beach, Florida 33064 USA  
Toll Free: 800-331-4675 • Direct: 954-426-2965 • Fax: 954-426-8389  
[www.sentecheas.com](http://www.sentecheas.com)

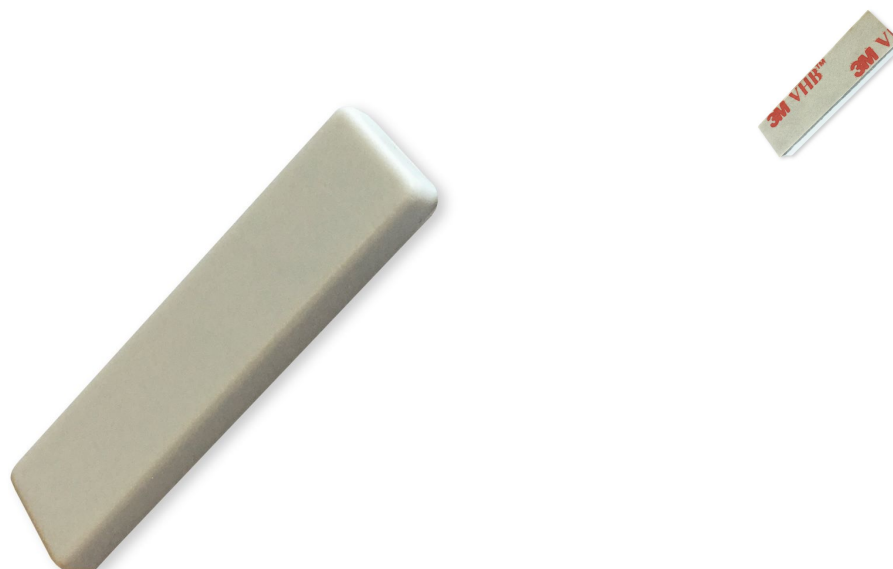


## STC5817

### TAG, ASSET, AM, NON-DEAC, GRAY PLASTIC

Asset tag features permanent adhesive backed plastic housing with a non-deactivatable embedded circuit. Used for protecting valuable assets, merchandise on display, store fixtures, etc. Has high strength 3M VHB adhesive on back side for permanent application to items.

Available colors, black, gray and white



Specifications subject to change without notice

2843 Center Port Circle, Pompano Beach, Florida 33064 USA  
Toll Free: 800-331-4675 • Direct: 954-426-2965 • Fax: 954-426-8389  
[www.sentecheas.com](http://www.sentecheas.com)



## **STC5890**

### **TAG, PADLOCK, 58 KHZ AM, GRAY, STANDARD LOCK**

SenTech Ultralock tag can be used to protect jewelry, belts, handbags, secure keys etc. in retail and security environments. This tag features a ferrite core 58 KHz. tag with a super lock magnetic clutch. This tag requires a super lock magnetic detacher for removal.

Also available in RF 8.2 MHz. frequency



Specifications subject to change without notice

2843 Center Port Circle, Pompano Beach, Florida 33064 USA  
Toll Free: 800-331-4675 • Direct: 954-426-2965 • Fax: 954-426-8389  
[www.sentecheas.com](http://www.sentecheas.com)



## **STC5891-AM**

### **TAG, GOLF CLUB, LIGHT GRAY**

The AM Golf Club Tag provides protection for uniquely-shaped merchandise while allowing safe customer interaction. It's perfect for golf clubs, corded electronics and much more. Its one-piece design provides ease of application and removal at checkout. Requires standard magnetic detacher.



Specifications subject to change without notice

2843 Center Port Circle, Pompano Beach, Florida 33064 USA  
Toll Free: 800-331-4675 • Direct: 954-426-2965 • Fax: 954-426-8389  
[www.sentecheas.com](http://www.sentecheas.com)





## **STC5892-AM**

### **TAG, GOLF TAG, 58 KHZ. LIGHT GRAY**

The AM Golf Club Tag provides protection for uniquely-shaped merchandise while allowing safe customer interaction. It's perfect for golf clubs, corded electronics and much more. Its one-piece design provides ease of application and removal at checkout. Requires standard magnetic detacher.



Specifications subject to change without notice

2843 Center Port Circle, Pompano Beach, Florida 33064 USA  
Toll Free: 800-331-4675 • Direct: 954-426-2965 • Fax: 954-426-8389  
[www.sentecheas.com](http://www.sentecheas.com)



STC5893-AM

**TAG, GOLF TAG, 58 KHZ. BLACK**

The AM Golf Club Tag provides protection for uniquely-shaped merchandise while allowing safe customer interaction. It's perfect for golf clubs, corded electronics and much more. Its one-piece design provides ease of application and removal at checkout. Requires standard magnetic detacher.



Specifications subject to change without notice

2843 Center Port Circle, Pompano Beach, Florida 33064 USA  
Toll Free: 800-331-4675 • Direct: 954-426-2965 • Fax: 954-426-8389  
[www.sentecheas.com](http://www.sentecheas.com)



## **STC5894-AM**

**TAG, BAT, MAGNETIC CLUTCH, 58 KHZ. GRAY**

tag, 58 khz. features imbedded ferrite core, magnetic release, standard lock. Used for securing baseball bats.



Specifications subject to change without notice

2843 Center Port Circle, Pompano Beach, Florida 33064 USA  
Toll Free: 800-331-4675 • Direct: 954-426-2965 • Fax: 954-426-8389  
[www.sentecheas.com](http://www.sentecheas.com)



## STC1100-5

**TAG, AM, 58 KHZ, DUAL LOCKING PIN LIGHT GRAY**

SenTech dual locking pin tag is compatible with all Acousto-Magnetic systems. Utilizes a dual clutch and pin combination. May be removed by special magnetic detachers.



Specifications subject to change without notice

2843 Center Port Circle, Pompano Beach, Florida 33064 USA  
Toll Free: 800-331-4675 • Direct: 954-426-2965 • Fax: 954-426-8389  
[www.sentecheas.com](http://www.sentecheas.com)



## **STC832-AM**

### **TAG, MINI BLISTER, W/PIN BACK 58 KHZ. (100 PER BAG)**

The mini Blister pack tag enables you to display racked merchandise while providing superior anti-theft protection. The mini tag size offers optimum detection utilizing ferrite core tag technology. This tag is available in both RF 8.2 Mhz. and 58 KHz. frequencies, with standard and super lock clutch.

Dimensions: L1.69"x W1.54"x D.67" Packaging: 1,000 pcs. / 100 per bag.  
Wt. 10 kg. / 22 LBs.



Specifications subject to change without notice

2843 Center Port Circle, Pompano Beach, Florida 33064 USA  
Toll Free: 800-331-4675 • Direct: 954-426-2965 • Fax: 954-426-8389  
[www.sentecheas.com](http://www.sentecheas.com)



## **STC830-AM**

### **BLISTER PACK TAG, 58 KHZ AM, GREY**

The SenTech blister pack tag is a unique dual lock tag used to protect blister pack items from shoplifters. It is attached over area of the peg hanger hole by piercing the package with dual locking pins. It provides excellent detection in most applications even when placed in close proximity to metal. It also prevents unauthorized opening of most packaged items. The tag may be removed from the product when sold and reused. It is compatible with AM shoplifting systems from any manufacturer.

Also available in 8.2 MHz



Specifications subject to change without notice

2843 Center Port Circle, Pompano Beach, Florida 33064 USA  
Toll Free: 800-331-4675 • Direct: 954-426-2965 • Fax: 954-426-8389  
[www.sentecheas.com](http://www.sentecheas.com)



## STC2011

### TAG, OPTICAL SAFER BLACK 58 KHZ ACOUSTO-MAGNETIC

The Optical Safer is compatible with all Sensormatic® 58 KHz Acousto-Magnetic EAS systems. Protects eye glasses by attaching to one arm. May only be removed by using an electric or manual shuttle detacher.

May be removed by STC508 detacher.



STC508 Detacher



Display Open



Display Folded

Specifications subject to change without notice

2843 Center Port Circle, Pompano Beach, Florida 33064 USA  
Toll Free: 800-331-4675 • Direct: 954-426-2965 • Fax: 954-426-8389  
[www.sentecheas.com](http://www.sentecheas.com)



## **STC209**

**TACK, SWIVEL HEAD W/GROVES, 5/8" (16 MM)**

Hardened 5/8" flat head grooved steel pin, may be used with any RF hard tag.



Specifications subject to change without notice

2843 Center Port Circle, Pompano Beach, Florida 33064 USA  
Toll Free: 800-331-4675 • Direct: 954-426-2965 • Fax: 954-426-8389  
[www.sentecheas.com](http://www.sentecheas.com)





## STC210

**TACK, FLAT HEAD, 3 GROOVES, 5/8" (1.18 X 16 MM) LONG**

Hardened 5/8" flat head steel pin, may be used with any RF hard tag. Has grooved shaft for increased holding power.



Specifications subject to change without notice

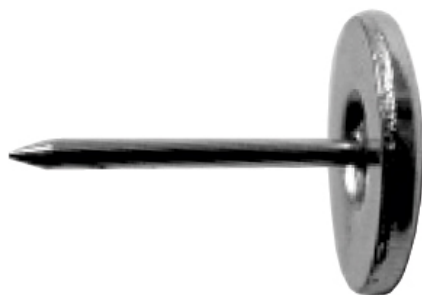
2843 Center Port Circle, Pompano Beach, Florida 33064 USA  
Toll Free: 800-331-4675 • Direct: 954-426-2965 • Fax: 954-426-8389  
[www.sentecheas.com](http://www.sentecheas.com)



## **STC211**

**TACK, FLAT HEAD WITH SMOOTH SHAFT 9/16" (14.5MM)**

Hardened 9/16" flat head steel, smooth shaft pin, may be used with any RF hard tag.



Specifications subject to change without notice

2843 Center Port Circle, Pompano Beach, Florida 33064 USA  
Toll Free: 800-331-4675 • Direct: 954-426-2965 • Fax: 954-426-8389  
[www.sentecheas.com](http://www.sentecheas.com)



## **STC212**

### **TACK, CONE HEAD W/ 4 GROOVES, 5/8"**

Hardened 5/8" steel pin, may be used with any RF hard tag, has large diameter cone shaped head for increased security. Has grooved shaft for increased holding power.



Specifications subject to change without notice

2843 Center Port Circle, Pompano Beach, Florida 33064 USA  
Toll Free: 800-331-4675 • Direct: 954-426-2965 • Fax: 954-426-8389  
[www.sentecheas.com](http://www.sentecheas.com)



## STC3021

### TACK, FLEX-TACK, 1-1/4 INCH STEEL WITH ROUND HEAD

FlexTack is a high security 1 1/4 inch flexible steel tack, used to attach ball clutch type plastic hard tags to shoes or other items that have small eyelet holes. FlexTack has a 1/2 inch diameter steel head crimped on a flexible steel cable. Compatible with all ball clutch type hard tags from any manufacturer.



Specifications subject to change without notice

2843 Center Port Circle, Pompano Beach, Florida 33064 USA  
Toll Free: 800-331-4675 • Direct: 954-426-2965 • Fax: 954-426-8389  
[www.sentecheas.com](http://www.sentecheas.com)



## **STC375**

### **TACK, FLAT HEAD, 3 GROOVE, 3/4" LENGTH**

Hardened 3/4" (19mm) long fixed flat head, nickel finish, may be used with any RF hard tag. Has longer shaft for thicker garments and is grooved for increased holding power.



Specifications subject to change without notice

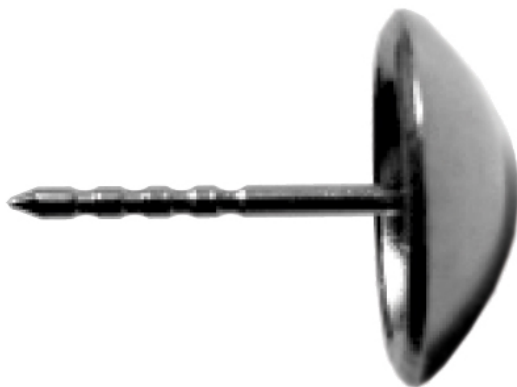
2843 Center Port Circle, Pompano Beach, Florida 33064 USA  
Toll Free: 800-331-4675 • Direct: 954-426-2965 • Fax: 954-426-8389  
[www.sentecheas.com](http://www.sentecheas.com)



## **SC3020**

### **TACK, ROUND DOME HEAD, WITH GROOVES**

Hardened 9/16" steel pin, may be used with any RF hard tag, has large diameter dome shaped head for increased security. Has grooved shaft for increased holding power..03



Specifications subject to change without notice

2843 Center Port Circle, Pompano Beach, Florida 33064 USA  
Toll Free: 800-331-4675 • Direct: 954-426-2965 • Fax: 954-426-8389  
[www.sentecheas.com](http://www.sentecheas.com)



**STC377**

**TACK, FLAT HEAD, 1 - 7/16" LONG, SMOOTH SHAFT**



Specifications subject to change without notice

2843 Center Port Circle, Pompano Beach, Florida 33064 USA  
Toll Free: 800-331-4675 • Direct: 954-426-2965 • Fax: 954-426-8389  
[www.sentecheas.com](http://www.sentecheas.com)



## SC3206

### TACK, SUPERTAG, GRAY

Gray plastic head with 9/16" hardened stainless steel pin, used with Sensormatic® SuperTag®. Also compatible with many other hard tags.



Specifications subject to change without notice

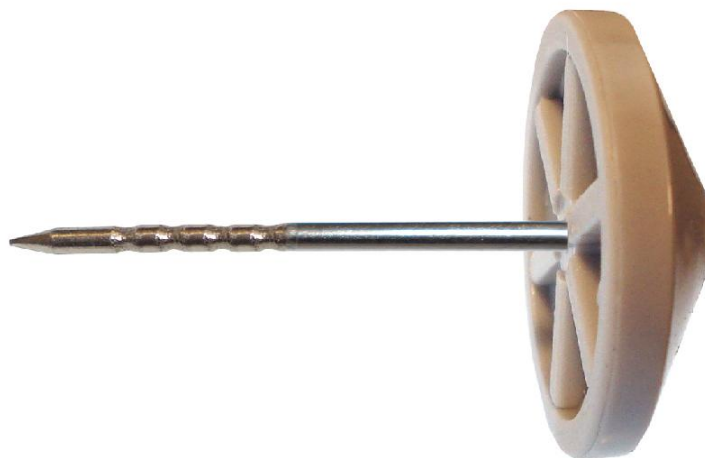
2843 Center Port Circle, Pompano Beach, Florida 33064 USA  
Toll Free: 800-331-4675 • Direct: 954-426-2965 • Fax: 954-426-8389  
[www.sentecheas.com](http://www.sentecheas.com)





**STC217**

**TACK, PLASTIC CONICAL HEAD, 1" , 4 GROOVE SS, GRAY**



Specifications subject to change without notice

2843 Center Port Circle, Pompano Beach, Florida 33064 USA  
Toll Free: 800-331-4675 • Direct: 954-426-2965 • Fax: 954-426-8389  
[www.sentecheas.com](http://www.sentecheas.com)



## STC215

### TACK, PLASTIC HEAD WITH 4 GROOVES STAINLESS, .700 LONG

Hardened stainless steel pin .700" length with clear polycarbonate plastic head. Slightly longer than standard tacks allowing it to be used with thicker items like shoes, coats, carpets, etc.. May be used with any standard tags.



Specifications subject to change without notice

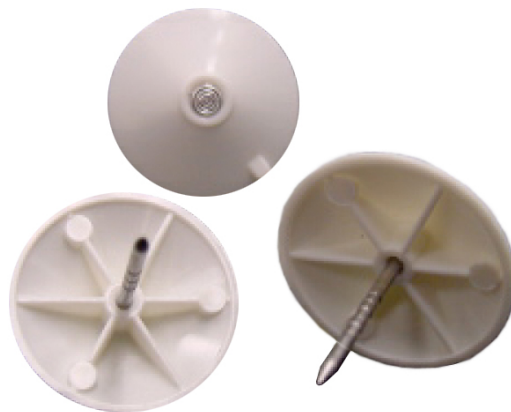
2843 Center Port Circle, Pompano Beach, Florida 33064 USA  
Toll Free: 800-331-4675 • Direct: 954-426-2965 • Fax: 954-426-8389  
[www.sentecheas.com](http://www.sentecheas.com)



## **STC200X**

### **TACK, ALLIGATOR, WHITE**

Hardened stainless steel pin 9/16" length with white plastic head, used with SenTech UltraTags®, Sensormatic® UltraGator®, Alligator®, and MicroGator® Tags



Specifications subject to change without notice

2843 Center Port Circle, Pompano Beach, Florida 33064 USA  
Toll Free: 800-331-4675 • Direct: 954-426-2965 • Fax: 954-426-8389  
[www.sentecheas.com](http://www.sentecheas.com)



## STC2002-01

### TACK, GREY "NOGO PIN SHIELD"

Large diameter 1.75" (45 mm) round dome shaped plastic head tack with hardened .75" (19 mm) 3 groove steel pin, may be used with most RF hard tags that are 1.8" (46 mm) or larger in diameter. Provides an increased level of security from tampering.

Diameter 1.75" (45 mm)



For STC2002



Specifications subject to change without notice

2843 Center Port Circle, Pompano Beach, Florida 33064 USA  
Toll Free: 800-331-4675 • Direct: 954-426-2965 • Fax: 954-426-8389  
[www.sentecheas.com](http://www.sentecheas.com)



## STC2050-01

**TACK, MINI DOT™, SMOOTH SHAFT, BLACK PLASTIC 1.187" DIA.**

The Mini DOT™ tack is designed to fit together perfectly with the Mini DOT™ Tag making it virtually impossible to defeat using cutters. It has a 9/16" smooth shaft pin made from hardened nickel plated steel.



Tag & Tack



Tag & Tack

Specifications subject to change without notice

2843 Center Port Circle, Pompano Beach, Florida 33064 USA  
Toll Free: 800-331-4675 • Direct: 954-426-2965 • Fax: 954-426-8389  
[www.sentecheas.com](http://www.sentecheas.com)



## **MJAMT3200-G**

**TACK, GRAY, PLASTIC HEAD, 17.9MM LONG GROOVED, SS**

Tack, gray plastic dome shaped head with stainless steel 4 groove pin. This tack can be used with any magnetic release hard tag. This tack is for use with the MVST-R Sensormatic magnetic release source tag.



Specifications subject to change without notice

2843 Center Port Circle, Pompano Beach, Florida 33064 USA  
Toll Free: 800-331-4675 • Direct: 954-426-2965 • Fax: 954-426-8389  
[www.sentecheas.com](http://www.sentecheas.com)



## **MJ7400**

### **TACK, GRAY, PLASTIC HEAD, 17MM LONG GROOVED, SS, MJ7400**

Tack, gray plastic dome shaped head with stainless steel 4 groove pin. This tack can be used with any magnetic release hard tag. This tack is for use with the MVST-R Sensormatic magnetic release source tag.

AMT-1000  
AMT-3200



Specifications subject to change without notice

2843 Center Port Circle, Pompano Beach, Florida 33064 USA  
Toll Free: 800-331-4675 • Direct: 954-426-2965 • Fax: 954-426-8389  
[www.sentecheas.com](http://www.sentecheas.com)



## **STC1406-01**

**TACK, CLEAR, 5/8" PIN 30MM DIA. (100 PER BAG)**

Clear plastic tack used with STC1406 ink tags



Specifications subject to change without notice

2843 Center Port Circle, Pompano Beach, Florida 33064 USA  
Toll Free: 800-331-4675 • Direct: 954-426-2965 • Fax: 954-426-8389  
[www.sentecheas.com](http://www.sentecheas.com)





## **STC1407-01**

**TACK, *WHITE*, 5/8" PIN (50 MM) DIA. 500/BOX**

Clear plastic tack used with STC1407 ink tags



Specifications subject to change without notice

**2843 Center Port Circle, Pompano Beach, Florida 33064 USA**  
**Toll Free: 800-331-4675 • Direct: 954-426-2965 • Fax: 954-426-8389**  
**[www.sentecheas.com](http://www.sentecheas.com)**



## STC1400

**TAG, INK, BLUE / YELLOW, INKPRO, SENTECH**

SenTech InkPro is manufactured using the highest quality materials including glass vials, hardened stainless steel pin, and ultraviolet resistant plastic. Printed text with graphic illustrations warns against unauthorized removal. The InkPro is compatible with all standard industry tags, clutches, MicroClamps and detachers.



STC1100-2 UltraTag



STC1050 Mini Tag



STC1401 ProLok

Specifications subject to change without notice

2843 Center Port Circle, Pompano Beach, Florida 33064 USA  
Toll Free: 800-331-4675 • Direct: 954-426-2965 • Fax: 954-426-8389  
[www.sentecheas.com](http://www.sentecheas.com)



## STC1405

### TAG, INKPRO MINI, BLUE / YELLOW, SENTECH

SenTech Mini InkPro is manufactured using the highest quality materials including glass vials, hardened 4 groove stainless steel pin, and ultraviolet resistant plastic. Printed text with graphic illustrations warn against unauthorized removal. The InkPro Mini is compatible with all standard industry tags, clutches, MicroClamps and detachers.

Measures 1.75" x .875" (44.5 x 22.3 mm) with 9/16" (14.3 mm) pin.



STC1100-2 UltraTag



STC1050 Mini Tag



STC1401 ProLok

Specifications subject to change without notice

2843 Center Port Circle, Pompano Beach, Florida 33064 USA  
Toll Free: 800-331-4675 • Direct: 954-426-2965 • Fax: 954-426-8389  
[www.sentecheas.com](http://www.sentecheas.com)



## STC1401

### CLUTCH, CONICAL, GREY, PROLOK

The Pro-Lok is a high quality magnetic clutch lock used with ink tags. It incorporates a high security three ball clutch lock for superior holding power that securely locks ink tags to items preventing unauthorized removal. The Pro-Lok is compatible with most standard ink tags and detachers.



InkPro Mini



InkPro

Specifications subject to change without notice

2843 Center Port Circle, Pompano Beach, Florida 33064 USA  
Toll Free: 800-331-4675 • Direct: 954-426-2965 • Fax: 954-426-8389  
[www.sentecheas.com](http://www.sentecheas.com)



## **SC3003**

### **TAG, LOCK INK, MICRO CLAMP, REV. 2**

SenTech Micro Clamps do not alarm any systems and are used for attaching ink tags to garments. They are removed with standard SenTech, or Sensormatic Hand Detachers and Power Detachers.

SenTech offers new SenTech Hand Detachers, Model STC540, and refurbished Sensormatic power detachers.



Specifications subject to change without notice

2843 Center Port Circle, Pompano Beach, Florida 33064 USA  
Toll Free: 800-331-4675 • Direct: 954-426-2965 • Fax: 954-426-8389  
[www.sentecheas.com](http://www.sentecheas.com)



## **STC3018-24**

### **LANYARD, 24" WHITE**

High security 24" PVC coated galvanized steel lanyard, used to attach any plastic hard tag to items that have handles or are irregular shaped such as luggage, handbags, sporting goods, etc.

\* Also available in 6 and 9 inch length.



Specifications subject to change without notice

2843 Center Port Circle, Pompano Beach, Florida 33064 USA  
Toll Free: 800-331-4675 • Direct: 954-426-2965 • Fax: 954-426-8389  
[www.sentecheas.com](http://www.sentecheas.com)



## **STC3022**

### **LANYARD, 6" BLACK 1/2" LOOP WITH GROOVED PIN**

High security 6" PVC coated galvanized steel lanyard, used to attach any plastic hard tag to items that have handles or are irregular shaped such as luggage, handbags, sporting goods, etc.

Hardened stainless steel groove pin attached to one end allows quick application to merchandise.



Specifications subject to change without notice

2843 Center Port Circle, Pompano Beach, Florida 33064 USA  
Toll Free: 800-331-4675 • Direct: 954-426-2965 • Fax: 954-426-8389  
[www.sentecheas.com](http://www.sentecheas.com)



## **STC3022-16**

### **LANYARD, 16" BLACK 1/2" LOOP WITH GROOVED PIN**

High security 6" PVC coated galvanized steel lanyard, used to attach any plastic hard tag to items that have handles or are irregular shaped such as luggage, handbags, sporting goods, etc.

Hardened stainless steel groove pin attached to one end allows quick application to merchandise.



Specifications subject to change without notice

2843 Center Port Circle, Pompano Beach, Florida 33064 USA  
Toll Free: 800-331-4675 • Direct: 954-426-2965 • Fax: 954-426-8389  
[www.sentecheas.com](http://www.sentecheas.com)



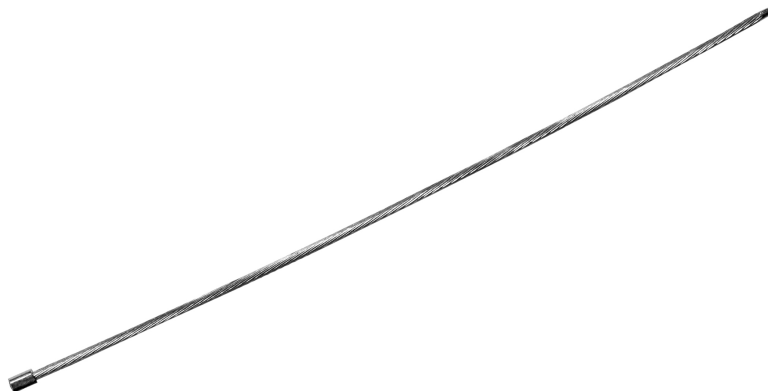


## **STC3023**

### **LANYARD, 8" GALV. STEEL WITH BALL STOP & POINT**

High security 8" galvanized steel lanyard, used to attach ball clutch type plastic hard tags to items that have handles or are irregular shaped such as shoes, luggage, handbags, sporting goods, etc.

Note: Tags must have a special through hole to use this lanyard.



Specifications subject to change without notice

**2843 Center Port Circle, Pompano Beach, Florida 33064 USA**  
**Toll Free: 800-331-4675 • Direct: 954-426-2965 • Fax: 954-426-8389**  
**[www.sentecheas.com](http://www.sentecheas.com)**



## STC3032

### **LANYARD PIN, GRAY PLASTIC HEAD, 4" CLEAR W/ 5/8" GRV PIN. (50 PER BAG)**

High security 4" clear plastic coated galvanized steel lanyard, used to attach any plastic hard tag to items that have handles or are irregular shaped such as luggage, handbags, sporting goods, etc.

Hardened stainless steel grooved pin attached to one end, and a plastic thru-hole head on the other end allows quick application to merchandise.



Specifications subject to change without notice

2843 Center Port Circle, Pompano Beach, Florida 33064 USA  
Toll Free: 800-331-4675 • Direct: 954-426-2965 • Fax: 954-426-8389  
[www.sentecheas.com](http://www.sentecheas.com)



## **STC3018**

### **LANYARD, 6" WHITE**

High security 6" PVC coated galvanized steel lanyard, used to attach any plastic hard tag to items that have handles or are irregular shaped such as luggage, handbags, sporting goods, etc.

\* Also available in 8 and 9 inch length.



Specifications subject to change without notice

2843 Center Port Circle, Pompano Beach, Florida 33064 USA  
Toll Free: 800-331-4675 • Direct: 954-426-2965 • Fax: 954-426-8389  
[www.sentecheas.com](http://www.sentecheas.com)



## **STC3018-01**

### **LANYARD, 8" WHITE**

High security 8" PVC coated galvanized steel lanyard, used to attach any plastic hard tag to items that have handles or are irregular shaped such as luggage, handbags, sporting goods, etc.

\* Also available in 6 and 9 inch length.



Specifications subject to change without notice

2843 Center Port Circle, Pompano Beach, Florida 33064 USA  
Toll Free: 800-331-4675 • Direct: 954-426-2965 • Fax: 954-426-8389  
[www.sentecheas.com](http://www.sentecheas.com)



## **STC3018-12**

### **LANYARD, 12" WHITE**

High security 9" PVC coated galvanized steel lanyard, used to attach any plastic hard tag to items that have handles or are irregular shaped such as luggage, handbags, sporting goods, etc.

\* Also available in 6 and 8 inch length.



Specifications subject to change without notice

2843 Center Port Circle, Pompano Beach, Florida 33064 USA  
Toll Free: 800-331-4675 • Direct: 954-426-2965 • Fax: 954-426-8389  
[www.sentecheas.com](http://www.sentecheas.com)



## **STC3018-48**

### **LANYARD, 48" WHITE**

High security 48" PVC coated galvanized steel lanyard, used to attach any plastic hard tag to items that have handles or are irregular shaped such as luggage, handbags, sporting goods, etc.

\* Also available in 6, 9, and 24 inch lengths.



Specifications subject to change without notice

2843 Center Port Circle, Pompano Beach, Florida 33064 USA  
Toll Free: 800-331-4675 • Direct: 954-426-2965 • Fax: 954-426-8389  
[www.sentecheas.com](http://www.sentecheas.com)



## STC3019

### P-CLIP 1/2" LOOP

P-Clip, used to protect a variety of items such as sun glasses, golf clubs etc. May be used to attach any manufacturers hard tag.

Shown with Mini RF tag for illustration purpose only. May be used with any hard tag.



Specifications subject to change without notice

2843 Center Port Circle, Pompano Beach, Florida 33064 USA  
Toll Free: 800-331-4675 • Direct: 954-426-2965 • Fax: 954-426-8389  
[www.sentecheas.com](http://www.sentecheas.com)



## **STC3020**

### **VERSA LANYARD, 6" FLAT PLASTIC ADJ. DIAMETER 1/8" TO 1.75"**

High security black plastic lanyard, adjustable length from dia 1/8" to 1.75" used to attach any plastic hard tag to items that have handles or are irregular shaped such as luggage, handbags, sporting goods, tools, etc.



Specifications subject to change without notice

2843 Center Port Circle, Pompano Beach, Florida 33064 USA  
Toll Free: 800-331-4675 • Direct: 954-426-2965 • Fax: 954-426-8389  
[www.sentecheas.com](http://www.sentecheas.com)





## **STC3020-9**

### **VERSA LANYARD, 9" FLAT PLASTIC ADJ. DIAMETER 1/8" TO 3.75"**

High security black plastic lanyard, adjustable length from dia 1/8" to 3.75" used to attach any plastic hard tag to items that have handles or are irregular shaped such as luggage, handbags, sporting goods, tools, etc.

Tag shown is for illustration purposes only . May also be used with other tags.



Specifications subject to change without notice

2843 Center Port Circle, Pompano Beach, Florida 33064 USA  
Toll Free: 800-331-4675 • Direct: 954-426-2965 • Fax: 954-426-8389  
[www.sentecheas.com](http://www.sentecheas.com)



## STC3026

### **LANYARD, CLEAR, 7" (177.8MM) LG, 5/8" (16MM) 4 GROOVED SUPERTAG PIN**

High security wire lanyard, 4mm diameter stranded galvanized steel wire with a clear vinyl outer jacket. Lanyard features heavy duty stamped end with hole, and 16mm long stainless steel grooved shaft pin on the opposite end. This lanyard is used for attaching a security hard tag to hand bags, luggage, sporting goods, tools, etc.



Specifications subject to change without notice

2843 Center Port Circle, Pompano Beach, Florida 33064 USA  
Toll Free: 800-331-4675 • Direct: 954-426-2965 • Fax: 954-426-8389  
[www.sentecheas.com](http://www.sentecheas.com)



**0400-0003**

**LANYARD, BLACK, COILED, 8' LENGTH**

High security coiled PVC coated galvanized steel lanyard for SenTech table top detachers. Expands up to 8 feet in length. May also be used to secure hard good items, cameras, electronic equipment etc.



Specifications subject to change without notice

2843 Center Port Circle, Pompano Beach, Florida 33064 USA  
Toll Free: 800-331-4675 • Direct: 954-426-2965 • Fax: 954-426-8389  
[www.sentecheas.com](http://www.sentecheas.com)



## STC3029

### **LANYARD, 16" CLEAR , 5/8" SMOOTH PIN, TUBULAR ROUND STOP, 100 PER BUNDLE**

High security 16" steel black lanyard, used to attach ball clutch type plastic hard tags to items that have handles or are irregular shaped such as shoes, luggage, handbags, sporting goods, etc. Has 5/8" (16 mm) blunt pin.

Note: Tags must have a special through hole to use this lanyard.

Minimum order quantity 100 per bundle.



Specifications subject to change without notice

2843 Center Port Circle, Pompano Beach, Florida 33064 USA  
Toll Free: 800-331-4675 • Direct: 954-426-2965 • Fax: 954-426-8389  
[www.sentecheas.com](http://www.sentecheas.com)



## **STC3030**

### **LANYARD 3" TRANSPARENT, THICK**

Used with hard tags that have a hole allowing the lanyard to be inserted and locked into the tag body.

LANYARD ONLY - 3.1MM DIAM - FOR FASHION2 HT



Specifications subject to change without notice

2843 Center Port Circle, Pompano Beach, Florida 33064 USA  
Toll Free: 800-331-4675 • Direct: 954-426-2965 • Fax: 954-426-8389  
[www.sentecheas.com](http://www.sentecheas.com)

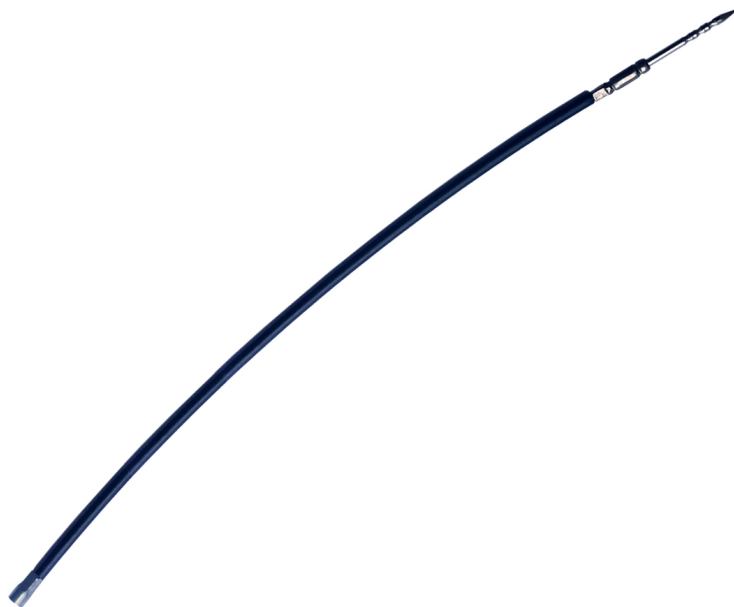


## **STC3031**

### **LANYARD 3" BLACK, REMOVABLE WITH PIN AND BALL END STOP**

Used with hard tags that have a hole allowing the lanyard to be inserted and locked into the tag body.

LANYARD ONLY - 3.1MM DIAM - FOR FASHION2 HT



Specifications subject to change without notice

2843 Center Port Circle, Pompano Beach, Florida 33064 USA  
Toll Free: 800-331-4675 • Direct: 954-426-2965 • Fax: 954-426-8389  
[www.sentecheas.com](http://www.sentecheas.com)



## **STC3027**

### **LANYARD, CLEAR, 7" (177.8MM) LONG, 5/8" (16MM) 4 GROOVED SUPERTAG STYLE PIN**

High security wire lanyard, 4mm diameter stranded galvanized steel wire with a clear vinyl outer jacket. Lanyard features heavy duty crimp sleeve 1/2" loop end, and 16mm long stainless steel grooved shaft pin on the opposite end. This lanyard is used for attaching a security hard tag to hand bags, luggage, sporting goods, tools, etc.



Specifications subject to change without notice

2843 Center Port Circle, Pompano Beach, Florida 33064 USA  
Toll Free: 800-331-4675 • Direct: 954-426-2965 • Fax: 954-426-8389  
[www.sentecheas.com](http://www.sentecheas.com)



## **STC3028**

### **LANYARD, BLACK, 7" (177.8MM) LONG, 5/8" (16MM) 4 GROOVED SUPERTAG STYLE PIN**

High security wire lanyard, 4mm diameter stranded galvanized steel wire with a Black vinyl outer jacket. Lanyard features heavy duty crimp sleeve 1/2" loop end, and 16mm long stainless steel grooved shaft pin on the opposite end. This lanyard is used for attaching a security hard tag to hand bags, luggage, sporting goods, tools, etc.



Specifications subject to change without notice

2843 Center Port Circle, Pompano Beach, Florida 33064 USA  
Toll Free: 800-331-4675 • Direct: 954-426-2965 • Fax: 954-426-8389  
[www.sentecheas.com](http://www.sentecheas.com)





## STC517

### DETACHER, MAGNETIC SUPERLOCK

The SenTech Super-Lock Magnetic detacher is used to open the any magnetic release RF or AM tags. Uses multiple extremely powerful rare earth magnets designed to release magnetic super-locks.

Detacher may be securely surface mounted with supplied hardware.



Specifications subject to change without notice

2843 Center Port Circle, Pompano Beach, Florida 33064 USA  
Toll Free: 800-331-4675 • Direct: 954-426-2965 • Fax: 954-426-8389  
[www.sentecheas.com](http://www.sentecheas.com)

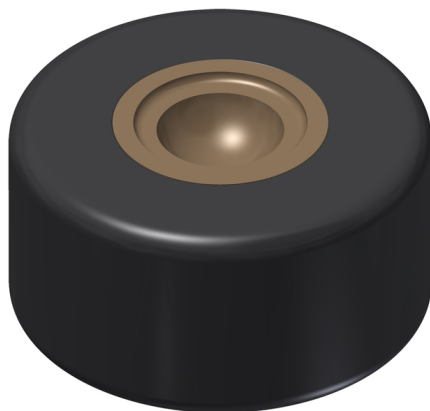


## **STC500**

### **DETACHER, STANDARD MAGNETIC BLACK, MADE IN USA**

Low cost surface mounted magnetic detacher designed to remove all industry standard tags and ink tag clutches. Made of solid aluminum with black hard coat finish. Includes mounting hardware.

Made in USA



Specifications subject to change without notice

2843 Center Port Circle, Pompano Beach, Florida 33064 USA  
Toll Free: 800-331-4675 • Direct: 954-426-2965 • Fax: 954-426-8389  
[www.sentecheas.com](http://www.sentecheas.com)



## STC511-R

### DETACHER MAGNETIC HAND WITH 10' RETRACTABLE CABLE

SenTech's innovative retractor has a heavy gauge plastic coated steel cable that securely attaches the tag detacher to the point of sale counter. It allows the detacher to be pulled out up to ten feet away from its mounting point to easily remove tags from large items that cannot be put on the checkout counter such as barbeque grills, generators, pressure washers, tools etc. Detacher cable automatically retracts back into its housing when not in use. This version comes complete with SenTech's Magnetic Hand Detacher as shown.

- Detacher extends out up to 10 Feet from mounting point
- SenTech hand detachers available
- Retrofit kits are available for detachers made by other manufacturers.



Removes UltraTag®



UltraLanyard

Specifications subject to change without notice

2843 Center Port Circle, Pompano Beach, Florida 33064 USA  
Toll Free: 800-331-4675 • Direct: 954-426-2965 • Fax: 954-426-8389  
[www.sentecheas.com](http://www.sentecheas.com)



## STC525

### DETACHER, MAGNETIC SUPER LOCK, WITH COILED LANYARD

The SenTech Super-Lock Magnetic detacher is used to open the any magnetic release RF or AM tags. Uses an extremely powerful rare earth magnet designed to release magnetic super-locks. Detacher features a coiled lanyard (stretches to 48", with a heavy duty crimp lug for attaching to a sales counter, with sheet metal screw and flat washer. The Detacher does not include a lock or mounting base.

Dimensions: H1.78" x D1.87".

Weight: 10 oz.



Specifications subject to change without notice

2843 Center Port Circle, Pompano Beach, Florida 33064 USA  
Toll Free: 800-331-4675 • Direct: 954-426-2965 • Fax: 954-426-8389  
[www.sentecheas.com](http://www.sentecheas.com)

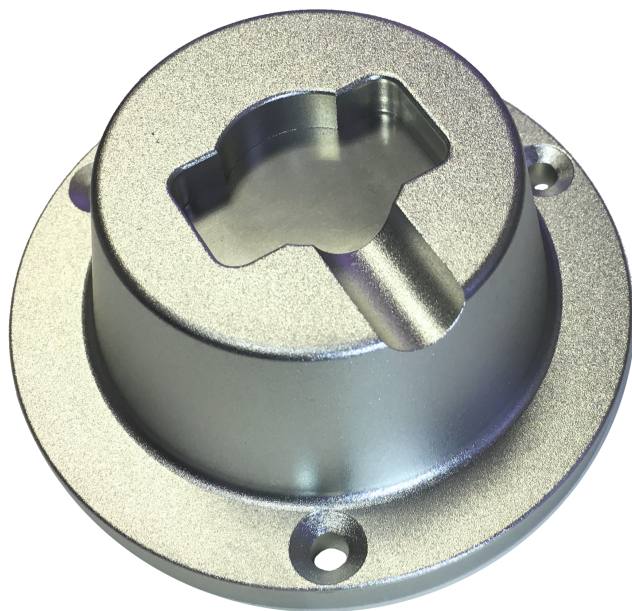


## STC522

### **DETACHER, SURFACE MOUNT, SUPER LOCK, 3.5" (89 MM) DIA.**

The SenTech Super-Lock Magnetic detacher is used to open the any magnetic release RF or AM tags. Uses multiple extremely powerful rare earth magnets designed to release magnetic super-locks. The detacher does not include a lock.

Includes mounting screws, packed individually.  
Dimensions: 1.45"H x 3.5" OD. wt 15.5 oz.



Specifications subject to change without notice

2843 Center Port Circle, Pompano Beach, Florida 33064 USA  
Toll Free: 800-331-4675 • Direct: 954-426-2965 • Fax: 954-426-8389  
[www.sentecheas.com](http://www.sentecheas.com)



## STC511

### **DETACHER, MAGNETIC, HAND HELD, WITH BLACK LANYARD**

Hand held magnetic detacher designed to remove all industry standard tags and ink tag clutches. Made of high quality materials with black plastic hand grip, and 30" lanyard for securing to a sales counter. Dimensions 1.25" O.D. x 4' long.



Specifications subject to change without notice

2843 Center Port Circle, Pompano Beach, Florida 33064 USA  
Toll Free: 800-331-4675 • Direct: 954-426-2965 • Fax: 954-426-8389  
[www.sentecheas.com](http://www.sentecheas.com)



## STC521

### DETACHER, RECESSED IN-COUNTER MOUNT, SUPER LOCK

The SenTech Super-Lock Magnetic detacher is used to open the any magnetic release RF or AM tags. Uses multiple extremely powerful rare earth magnets designed to release magnetic super-locks.

Detacher designed for recessed in counter application. The detacher can also be surface mounted with the hardware included.

Dimensions: 2.95"Dia. (75mm) x 1.45"H (37mm) , Wt. 15oz. (425 grams)



Specifications subject to change without notice

2843 Center Port Circle, Pompano Beach, Florida 33064 USA  
Toll Free: 800-331-4675 • Direct: 954-426-2965 • Fax: 954-426-8389  
[www.sentecheas.com](http://www.sentecheas.com)



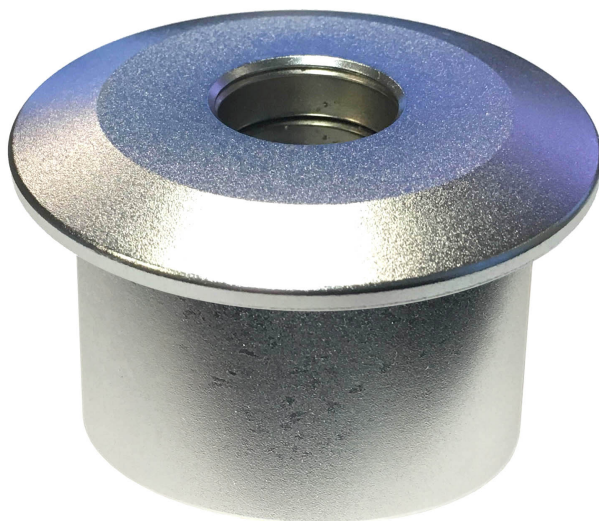
## **STC519**

### **DETACHER, RECESSED IN-COUNTER MOUNT, SUPER LOCK**

The SenTech Super-Lock Magnetic detacher is used to open the any magnetic release RF or AM tags. Uses multiple extremely powerful rare earth magnets designed to release magnetic super-locks.

Detacher designed for Sink-In counter application.

Dimensions: 2.95"Dia. (75mm) x 1.77"H (44mm) , Wt. 15oz. (425 grams)



Specifications subject to change without notice

2843 Center Port Circle, Pompano Beach, Florida 33064 USA  
Toll Free: 800-331-4675 • Direct: 954-426-2965 • Fax: 954-426-8389  
[www.sentecheas.com](http://www.sentecheas.com)





## **STC518**

### **DETACHER, DOME, MAGNETIC SUPERLOCK**

The SenTech Super-Lock Magnetic detacher is used to open the any magnetic release RF or AM tags. Uses multiple extremely powerful rare earth magnets designed to release magnetic super-locks.

Detacher may be securely surface mounted with supplied hardware.



Specifications subject to change without notice

**2843 Center Port Circle, Pompano Beach, Florida 33064 USA**  
**Toll Free: 800-331-4675 • Direct: 954-426-2965 • Fax: 954-426-8389**  
**[www.sentecheas.com](http://www.sentecheas.com)**



## STC310

### DETACHER, LOCK & KEY

SenTech detacher lock prevents unauthorized removal of tags. It is securely held in place by the magnetic field of the detacher and can be easily removed by a special key.

The lock kit includes a lock, key and a colored wristband key chain.



Specifications subject to change without notice

2843 Center Port Circle, Pompano Beach, Florida 33064 USA  
Toll Free: 800-331-4675 • Direct: 954-426-2965 • Fax: 954-426-8389  
[www.sentecheas.com](http://www.sentecheas.com)



## STC540

### DETACHER HAND, SENTECH W/ BLACK 3' LANYARD

SenTech Hand Detacher (non-power) removes SenTech's UltraTag® and all standard Sensormatic® Alligator®, MicroGator®, UltraGator® and MicroClamp tags.

- Improved design requires up to 40 percent less force than other detachers.
- Easily removes tags that are damaged or difficult to detach.



UltraTag®



UltraLanyard



MicroGator®

Specifications subject to change without notice

2843 Center Port Circle, Pompano Beach, Florida 33064 USA  
Toll Free: 800-331-4675 • Direct: 954-426-2965 • Fax: 954-426-8389  
[www.sentecheas.com](http://www.sentecheas.com)



## STC540-R

### DETACHER HAND, WITH 10' RETRACTABLE CABLE

SenTech's innovative retractor has a heavy gauge plastic coated steel cable that securely attaches the tag detacher to the point of sale counter. It allows the detacher to be pulled out up to ten feet away from its mounting point to easily remove tags from large items that cannot be put on the checkout counter such as barbeque grills, generators, pressure washers, tools etc. Detacher cable automatically retracts back into its housing when not in use. This version comes complete with SenTech's Hand Detacher as shown.

- Detacher extends out up to 10 Feet from mounting point
- Improved detacher design removes tags with up to 40% less effort
- Long life spring mechanism with externally adjustable tension
- SenTech magnetic detachers available
- Retrofit kits are available for detachers made by other manufacturers.



Specifications subject to change without notice

2843 Center Port Circle, Pompano Beach, Florida 33064 USA  
Toll Free: 800-331-4675 • Direct: 954-426-2965 • Fax: 954-426-8389  
[www.sentecheas.com](http://www.sentecheas.com)



## MK225

### DETACHER, HAND NON POWER, SUPERTAG #AMD-3040

Hand operated (non power) detacher. Removes all Sensormatic® SuperTags®.



SuperTag



SuperTag II



SuperTag III

Specifications subject to change without notice

2843 Center Port Circle, Pompano Beach, Florida 33064 USA  
Toll Free: 800-331-4675 • Direct: 954-426-2965 • Fax: 954-426-8389  
[www.sentecheas.com](http://www.sentecheas.com)



## MK395DT

**DETACHER, POWER SUPERTAG, DESK TOP, MK395DT**

120 VAC powered, removes all Sensormatic® SuperTags®



120VAC Power Supply

Specifications subject to change without notice

2843 Center Port Circle, Pompano Beach, Florida 33064 USA  
Toll Free: 800-331-4675 • Direct: 954-426-2965 • Fax: 954-426-8389  
[www.sentecheas.com](http://www.sentecheas.com)

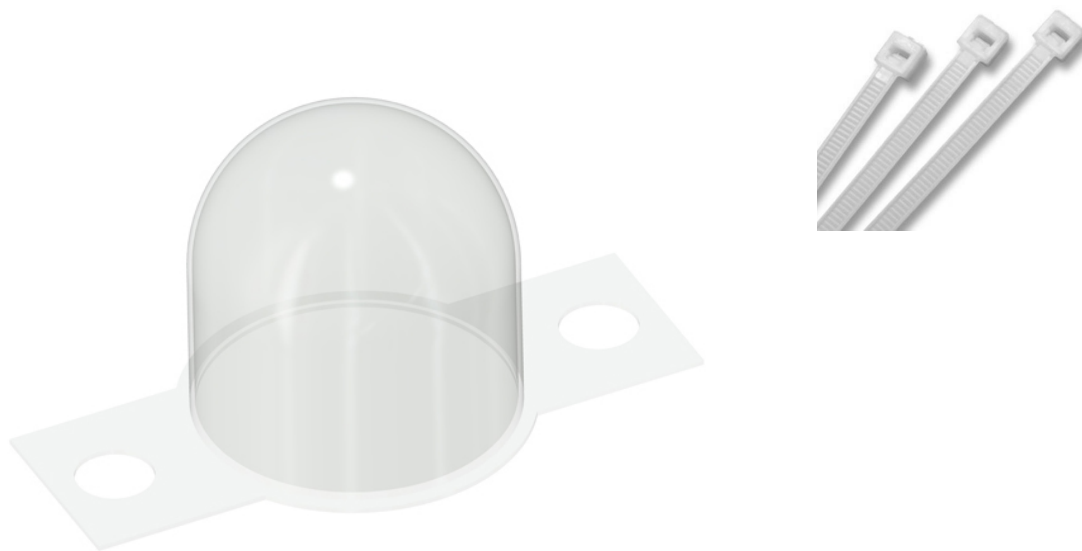


## DOM-2

### SECURITY CAP, CLEAR PLASTIC 2", 100 PER BOX

Clear plastic security cap attached to the top of a lamp harp to prevent retail shoppers from switching lamp shades from one lamp to another. Requires a cable tie, sold separately.

Cable tie order #2841-0236, 6" nylon natural color packed in bags of 1,000.



Specifications subject to change without notice

2843 Center Port Circle, Pompano Beach, Florida 33064 USA  
Toll Free: 800-331-4675 • Direct: 954-426-2965 • Fax: 954-426-8389  
[www.sentecheas.com](http://www.sentecheas.com)



## DOM-125

### SECURITY CAP, CLEAR PLASTIC 1.25", 100 PER BOX

Clear plastic security cap attached to the top of a lamp harp to prevent retail shoppers from switching lamp shades from one lamp to another. Requires a cable tie, sold separately.

Cable tie order #2841-0236, 6" nylon natural color packed in bags of 1,000.



Specifications subject to change without notice

2843 Center Port Circle, Pompano Beach, Florida 33064 USA  
Toll Free: 800-331-4675 • Direct: 954-426-2965 • Fax: 954-426-8389  
[www.sentecheas.com](http://www.sentecheas.com)





## 2ALMINICLND6

### 2 AL MINI CABLELOK-6IN-AM (25 PER CASE)

The 2 Alarm Mini CableLoks make open merchandising easier and more seamless than ever. Big protection wrapped in a small, elegant package make this solution the perfect option for securing a wide variety high-end hard and soft goods.

- Long lasting Lithium battery
- Flashing LED light and amplified 95 dBA alarm
- Overcomes safety hazards by eliminating hard-wired security
- Multiple lanyard lengths available to fit your needs



Specifications subject to change without notice

2843 Center Port Circle, Pompano Beach, Florida 33064 USA  
Toll Free: 800-331-4675 • Direct: 954-426-2965 • Fax: 954-426-8389  
[www.sentecheas.com](http://www.sentecheas.com)



## **STC5885**

### **TAG, CABLE LOCK, 2 ALARM AM, 58 KHZ, 3.5" (8.9 CM) LANYARD**

Two Alarm Mini Cable Locks allow open merchandising of high dollar merchandise. Small and elegant package with both audible and LED indicators. Activation beep and blinking LED armed status indications.

Dimensions: 2 x 1.25 x .75 Inches (50.8 x 31.8 x 19.1 MM)



Specifications subject to change without notice

2843 Center Port Circle, Pompano Beach, Florida 33064 USA  
Toll Free: 800-331-4675 • Direct: 954-426-2965 • Fax: 954-426-8389  
[www.sentecheas.com](http://www.sentecheas.com)



## **STC5885-48**

### **TAG, CABLE LOCK, 2 ALARM AM, 58 KHZ, 48" (123 CM) LANYARD**

Two Alarm Mini Cable Locks allow open merchandising of high dollar merchandise. Small and elegant package with both audible and LED indicators. Activation beep and blinking LED armed status indications.

Dimensions: 2 x 1.25 x .75 Inches (50.8 x 31.8 x 19.1 MM)



Specifications subject to change without notice

2843 Center Port Circle, Pompano Beach, Florida 33064 USA  
Toll Free: 800-331-4675 • Direct: 954-426-2965 • Fax: 954-426-8389  
[www.sentecheas.com](http://www.sentecheas.com)



## 2ALMNSWRPLND

### 2 ALARM MINI SPIDER WRAP - 27" AM *(25 PER CASE)*

The Mini Spider's unique size maximizes display opportunities for small packaged goods. The strong internal clutch mechanism enables the cables to be cinched tightly, providing increased security for your smaller boxed merchandise.

- Reusable, one-piece design
- Aircraft grade cable
- 95 dBA alarm
- Easy to apply and remove

NEW - IMPROVED LOCKING MECHANISM



Specifications subject to change without notice

2843 Center Port Circle, Pompano Beach, Florida 33064 USA  
Toll Free: 800-331-4675 • Direct: 954-426-2965 • Fax: 954-426-8389  
[www.sentecheas.com](http://www.sentecheas.com)



## **STC5895-AM**

**TAG, DISPOSABLE BOX WRAP, 58 KHZ. BLACK**

This disposable wrap tag features include light weight versatility, economical and easy to use for tagging small boxed items such as health and beauty products, electronics, hardware, and sporting goods.

Photo Not  
Available

Specifications subject to change without notice

**2843 Center Port Circle, Pompano Beach, Florida 33064 USA**  
**Toll Free: 800-331-4675 • Direct: 954-426-2965 • Fax: 954-426-8389**  
**[www.sentecheas.com](http://www.sentecheas.com)**



## **STC5882-S**

**OCTOWRAP, AM&RF 58KHZ & 8.2 MHZ, SMALL 2 ALARM, BLACK 25.5", (65 CM)**

The dual frequency AM & RF Small Octowrap is 1.75" (65mm) diameter and is designed to protect small to medium sized packaged merchandise using alarmed cables wrapped around the item. The Octowrap has an internal battery powered alarm that will sound if the unit is forcefully removed by cutting the cables. It also has two built in EAS tags that will trigger both AM and RF EAS systems.

Cable length: 25.59" (65 CM)  
Diameter 1.75" (45MM)



Specifications subject to change without notice

2843 Center Port Circle, Pompano Beach, Florida 33064 USA  
Toll Free: 800-331-4675 • Direct: 954-426-2965 • Fax: 954-426-8389  
[www.sentecheas.com](http://www.sentecheas.com)



## **AS1001-AM**

**OCTOPUS, AM 58KHZ, SMALL 2 ALARM, BLACK 12", (30 CM)**

The Small Octopus is designed to protect small packaged merchandise using alarmed cables wrapped around the item. The small Octopus has an internal battery powered alarm that will sound if the unit is forcefully removed by cutting the cables. It also has a built in EAS tag that will trigger the stores EAS system.

Cable length: 12 inches. (30 cm)



Specifications subject to change without notice

2843 Center Port Circle, Pompano Beach, Florida 33064 USA  
Toll Free: 800-331-4675 • Direct: 954-426-2965 • Fax: 954-426-8389  
[www.sentecheas.com](http://www.sentecheas.com)



## **AS1004-AM**

**OCTOPUS, AM 58KHZ, MEDIUM 3 ALARM, BLACK 31" (60CM)**

The Medium Octopus is designed to protect medium sized packaged merchandise using alarmed cables wrapped around the item. The medium Octopus has an internal battery powered alarm that will sound if the unit is forcefully removed by cutting the cables. It has a built in EAS tag that will trigger the stores EAS system and will also begin alarming if brought through the EAS system.

Cable length: 31 inches, (60 cm)



Specifications subject to change without notice

2843 Center Port Circle, Pompano Beach, Florida 33064 USA  
Toll Free: 800-331-4675 • Direct: 954-426-2965 • Fax: 954-426-8389  
[www.sentecheas.com](http://www.sentecheas.com)





## **AS1008-AM**

**OCTOPUS, AM 58KHZ, LARGE 3 ALARM, BLACK 48" (1.2 M)**

The Large Octopus is designed to protect large packaged merchandise using alarmed cables wrapped around the item. The large Octopus has an internal battery powered alarm that will sound if the unit is forcefully removed by cutting the cables. It has a built in EAS tag that will trigger the stores EAS system and will also begin alarming if brought through the EAS system.

Cable length: 48 inches, (1.2 m)



Specifications subject to change without notice

2843 Center Port Circle, Pompano Beach, Florida 33064 USA  
Toll Free: 800-331-4675 • Direct: 954-426-2965 • Fax: 954-426-8389  
[www.sentecheas.com](http://www.sentecheas.com)



## **STC5882-L**

**OCTOWRAP, AM&RF 58KHZ & 8.2 MHZ, LARGE 2 ALARM, BLACK 47", (120 CM)**

The dual frequency AM & RF large OctoWrap is designed to protect large sized packaged merchandise using alarmed cables wrapped around the item. The Octowrap has an internal battery powered alarm that will sound if the unit is forcefully removed by cutting the cables. It also has two built in EAS tags that will trigger both AM and RF EAS systems.

Cable length: 72" (180 CM)  
Diameter 2.165" (55MM)



Specifications subject to change without notice

2843 Center Port Circle, Pompano Beach, Florida 33064 USA  
Toll Free: 800-331-4675 • Direct: 954-426-2965 • Fax: 954-426-8389  
[www.sentecheas.com](http://www.sentecheas.com)



## **STC802-AM**

**BOTTLE TAG, TWIST LOCK, BLACK, LARGE 58 KHZ AM,  
SUPER LOCK**

The Bottle Tag high strength poly carbonate plastic and works with any 58 khz. acousto-magnetic system. It is attached in a twisting motion and locks with high security magnetic lock and PVC coated steel cables. It is used to secure wine and liquor bottles and is removed by super lock magnetic detachers.

Color may be different than photo.



Specifications subject to change without notice

2843 Center Port Circle, Pompano Beach, Florida 33064 USA  
Toll Free: 800-331-4675 • Direct: 954-426-2965 • Fax: 954-426-8389  
[www.sentecheas.com](http://www.sentecheas.com)



## S3HKCLND

### S3 HAND KEY-60IN LANYARD-AM

The Alpha S3 Detacher is a single key solution that opens all Alpha S3 products.

LATEST STYLE HANDKEY - ROUNDED EDGES



Specifications subject to change without notice

2843 Center Port Circle, Pompano Beach, Florida 33064 USA  
Toll Free: 800-331-4675 • Direct: 954-426-2965 • Fax: 954-426-8389  
[www.sentecheas.com](http://www.sentecheas.com)



## S3KEY

### S3 COUNTER KEY-NO EAS

S3 HandKeys offer superior aesthetics, ergonomic improvements and ease of use, with the trusted level of security you have come to expect. Serial numbers provide added security. The S3 HandKeys will open the entire line of S3 products.

S3 Locking Counter Key has the same specialized magnet array within an ergonomic handset that fits into a locking cradle for added security.



Specifications subject to change without notice

2843 Center Port Circle, Pompano Beach, Florida 33064 USA  
Toll Free: 800-331-4675 • Direct: 954-426-2965 • Fax: 954-426-8389  
[www.sentecheas.com](http://www.sentecheas.com)



## **SUPERXTKEY-S-60IN**

### **SUPER XT KEY-SILVER-60IN LNYRD**

The strongest detacher in the Alpha portfolio, the Super XT Key does it all. Its durable surface unlocks the entire line of S3, Standard Lock, XT and Super XT products. The deployable handheld portion is attached to the mounted base with a robust 60" cable to keep the key secure while maintaining its flexibility. Serial number provides added security.



Hard Tags



Cable Lok



Keepers

Specifications subject to change without notice

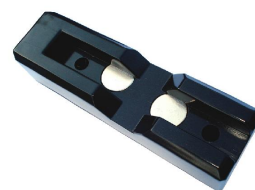
2843 Center Port Circle, Pompano Beach, Florida 33064 USA  
Toll Free: 800-331-4675 • Direct: 954-426-2965 • Fax: 954-426-8389  
[www.sentecheas.com](http://www.sentecheas.com)



## DVD-300

### CASE, DVD CASE SELL THRU

High security locking case for DVD sell thru applications. Case can be adapted for use with any RF, acousto-magnetic or electro-magnetic system by applying a security label inside for the respective eas system. Requires STC516 detacher for removal of DVD.



STC516 Detacher

Specifications subject to change without notice

2843 Center Port Circle, Pompano Beach, Florida 33064 USA  
Toll Free: 800-331-4675 • Direct: 954-426-2965 • Fax: 954-426-8389  
[www.sentecheas.com](http://www.sentecheas.com)





## **ACM216BENDL**

**KEEPER, HEALTH & BEAUTY, 58 KHZ AM, (20 CS.)**

Keeper, ideal for protecting Health & Beauty products. Accommodates boxes measuring up to 5.38"x2.83"x2.43".

Recommended applications include moisturizing and perfecting creams, body treatment oils, face scrubs, colognes and perfumes.



Specifications subject to change without notice

2843 Center Port Circle, Pompano Beach, Florida 33064 USA  
Toll Free: 800-331-4675 • Direct: 954-426-2965 • Fax: 954-426-8389  
[www.sentecheas.com](http://www.sentecheas.com)





## ACM326BNDL

### SMALL INK KEEPER-AM, (24 CS.)

Keeper, ideal for protecting ink cartridges and other small products. Accommodates boxes measuring up to 6.49"x3.84"x2.03".

Recommended applications include ink cartridges, cell phone accessories, digital cameras, and other small electronic devices.



Specifications subject to change without notice

2843 Center Port Circle, Pompano Beach, Florida 33064 USA  
Toll Free: 800-331-4675 • Direct: 954-426-2965 • Fax: 954-426-8389  
[www.sentecheas.com](http://www.sentecheas.com)



## ACM416BENDL

**H & B KEEPER, AM, (20 CS.)**

Alpha S3 Keepers are part of the broadest and best line of Keepers in the world. The patented magnetic lock is ultra secure, but quick and easy to open. Use Razor Keepers to protect and display today's most popular merchandise.

Razor cartridges  
Razor handles  
Health & beauty

DIM: 7.94 x 3.93 x 2.21 in



Specifications subject to change without notice

2843 Center Port Circle, Pompano Beach, Florida 33064 USA  
Toll Free: 800-331-4675 • Direct: 954-426-2965 • Fax: 954-426-8389  
[www.sentecheas.com](http://www.sentecheas.com)



## **AVM211GBNDL**

### **GAME BOY / DOUBLE CD KPR-AM**

Alpha Keepers® for media and electronics designed to provide locking protection with great visual display. You can find Keepers to fit your high-theft DVDs, CDs, Blu-ray, video games, and much more. Patented magnetic lock is ultra secure but quick and easy to open at checkout.

Provides excellent security with open display of merchandise  
Allows good visibility of packaging, product information and bar code.



Specifications subject to change without notice

2843 Center Port Circle, Pompano Beach, Florida 33064 USA  
Toll Free: 800-331-4675 • Direct: 954-426-2965 • Fax: 954-426-8389  
[www.sentecheas.com](http://www.sentecheas.com)



## **AVM426BENDL**

### **KEEPER (PACK OF 20) FOR H&B 58 KHZ AM, (20 CS.)**

Keeper, ideal for protecting Health & Beauty products. Accommodates boxes measuring up to 7.87"x2.83"x2.16".

Recommended applications include tanning lotions, body, hand and nail, tanning lotions, and shower gels.



Specifications subject to change without notice

2843 Center Port Circle, Pompano Beach, Florida 33064 USA  
Toll Free: 800-331-4675 • Direct: 954-426-2965 • Fax: 954-426-8389  
[www.sentecheas.com](http://www.sentecheas.com)



## **AVM466BNDL**

### **H&B KPR #9-AM, (20 CS.)**

Keeper, ideal for protecting Health & Beauty products. Accommodates boxes measuring up to 9.35"x2.84"x2.45".

Recommended applications include most Modele products, body oils, bronzers, Retinol creams



Specifications subject to change without notice

2843 Center Port Circle, Pompano Beach, Florida 33064 USA  
Toll Free: 800-331-4675 • Direct: 954-426-2965 • Fax: 954-426-8389  
[www.sentecheas.com](http://www.sentecheas.com)



## **AVM706BNDL**

### **MULTI-USE KEEPER, 706, AM**

Alpha Keepers® for media and electronics designed to provide locking protection with great visual display. Patented magnetic lock is ultra secure but quick and easy to open at checkout.

Provides excellent security with open display of merchandise  
Allows good visibility of packaging, product information and bar code.

Internal dimensions: 8.69"H x 5.49"W x 1.48"D



Specifications subject to change without notice

2843 Center Port Circle, Pompano Beach, Florida 33064 USA  
Toll Free: 800-331-4675 • Direct: 954-426-2965 • Fax: 954-426-8389  
[www.sentecheas.com](http://www.sentecheas.com)



## **AVM776BNDL**

### **MULTI-USE KEEPER-776-AM, (8 CS.)**

Alpha Keepers® for media and electronics designed to provide locking protection with great visual display. You can find Keepers to fit your high-theft DVDs, CDs, Blu-ray, video games, and much more. Patented magnetic lock is ultra secure but quick and easy to open at checkout.

Provides excellent security with open display of merchandise  
Allows good visibility of packaging, product information and bar code.



Specifications subject to change without notice

2843 Center Port Circle, Pompano Beach, Florida 33064 USA  
Toll Free: 800-331-4675 • Direct: 954-426-2965 • Fax: 954-426-8389  
[www.sentecheas.com](http://www.sentecheas.com)



## **AVM806BNDL**

### **MULTI-USE KEEPER-806-AM**

Keeper, ideal for protecting a wide variety of high-theft products. Accommodates boxes measuring up to 10.25"x8.96"x2.72".

Recommended applications include software, cell phones, calculators, graphic cards, sound cards, modems, and memory cards

LARGE SOFTWARE



Specifications subject to change without notice

2843 Center Port Circle, Pompano Beach, Florida 33064 USA  
Toll Free: 800-331-4675 • Direct: 954-426-2965 • Fax: 954-426-8389  
[www.sentecheas.com](http://www.sentecheas.com)





## **AVM906BNDL**

### **MULTI-USE KEEPER-906-AM (8 CS.)**

Keeper, ideal for protecting a wide variety of high-theft products. Accommodates boxes measuring up to 11.71"x9.71"x3.09".

Recommended applications include graphics cards, office software, hard drives, toothbrush kits, digital cameras, and GPS units



Specifications subject to change without notice

2843 Center Port Circle, Pompano Beach, Florida 33064 USA  
Toll Free: 800-331-4675 • Direct: 954-426-2965 • Fax: 954-426-8389  
[www.sentecheas.com](http://www.sentecheas.com)



## **S3HB109-AM**

### **SHOWCASE KEEPER, 109 AM, (20 TO A CARTON)**

Showcase Keepers® were created for maximum aesthetics and security for those products that need to be "showcased" well. Perfect for fragrances and high-theft beauty creams, the softer corners and sleek black pedestal ensure that your merchandise is well displayed and securely protected.

Internal dimensions 4.72"H x 6.32"W x 4.00"D



Specifications subject to change without notice

2843 Center Port Circle, Pompano Beach, Florida 33064 USA  
Toll Free: 800-331-4675 • Direct: 954-426-2965 • Fax: 954-426-8389  
[www.sentecheas.com](http://www.sentecheas.com)



## **AVM606BNDL**

### **MULTI-PAK DVD KEEPER-AM, (20 CS.)**

Keeper, ideal for protecting Multi-Pak DVDs and medium sized electronic devices. Accommodates boxes measuring up to 7.87"x5.93"x3.16".

Recommended applications include Multi-Pak DVDs, Nintendo DS hardware, and small electronics

MULTI-PAK DVD AND SMALL ELECTRONICS



Specifications subject to change without notice

2843 Center Port Circle, Pompano Beach, Florida 33064 USA  
Toll Free: 800-331-4675 • Direct: 954-426-2965 • Fax: 954-426-8389  
[www.sentecheas.com](http://www.sentecheas.com)



## STC550

### RETRACTOR MECHANISM - NO DETACHER

SenTech's innovative retractor has a heavy gauge plastic coated steel cable that securely attaches the tag detacher to the point of sale counter. It allows the detacher to be pulled out up to ten feet away from its mounting point to easily remove tags from large items that cannot be put on the checkout counter such as barbeque grills, generators, pressure washers, tools etc. Cable automatically retracts back into its housing when not in use. This version does not include a detacher.

- May be used to secure merchandise on display
- Cable extends out up to 10 Feet from mounting point
- Long life spring mechanism with externally adjustable tension
- Available with SenTech Hand and Magnetic Detachers
- Retrofit kits are available for detachers made by other manufacturers.



SuperTag Detacher



Magnetic



Hand Detacher

Specifications subject to change without notice

2843 Center Port Circle, Pompano Beach, Florida 33064 USA  
Toll Free: 800-331-4675 • Direct: 954-426-2965 • Fax: 954-426-8389  
[www.sentecheas.com](http://www.sentecheas.com)



## STC550-5

### RETRACTOR MECHANISM - ALLOWS OPEN DISPLAY MERCHANDISE

SenTech's innovative retractor allows retailers to display merchandise openly giving customers the opportunity to pick up and hold the merchandise. This helps customers to make buying decisions without having to wait for an associate to unlock display cases.

The retractor has a heavy gauge plastic coated steel cable that securely attaches the merchandise on display preventing theft.

Merchandise may be held out away from the display then the cable automatically retracts back into its housing when not in use.

- Secure merchandise on shelf and counter displays
  - Encourages customers to return display items back to their proper location
  - Prevents damaging merchandise in order to protect it
  - Keeps display merchandise in saleable condition
- 
- Cable extends out up to 5 feet from mounting point
  - Long life spring mechanism with externally adjustable tension



Tools

Specifications subject to change without notice

2843 Center Port Circle, Pompano Beach, Florida 33064 USA  
Toll Free: 800-331-4675 • Direct: 954-426-2965 • Fax: 954-426-8389  
[www.sentecheas.com](http://www.sentecheas.com)



## STC835

### ALARMING RECOILER, 48" PLASTIC COATED STEEL CABLE

Alarming recoiling tether with 48" steel cable. Includes a magnetically released locking device to form a loop around secured items. Alarms if the cable is cut anywhere along the length or if removed from the mounting surface. May be permanently mounted using high strength VHB tape (included) or screws. Alarm may only be reset with a special remote.



Specifications subject to change without notice

2843 Center Port Circle, Pompano Beach, Florida 33064 USA  
Toll Free: 800-331-4675 • Direct: 954-426-2965 • Fax: 954-426-8389  
[www.sentecheas.com](http://www.sentecheas.com)



## **STC835-R**

### **IR REMOTE CONTROL & MAGNETIC DETACHER**

IR remote control and magnetic detacher for use with the STC835 alarming recoiler. Features a magnet for removing the lanyard at display rack and a IR beam for disabling the alarm feature on the recoiler. Replace battery with CR1620 Lithium cell battery.



Specifications subject to change without notice

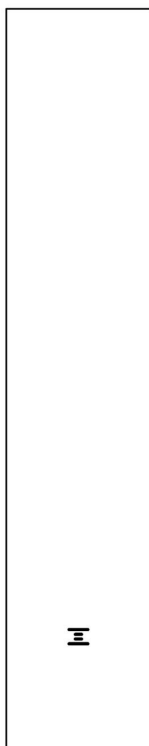
2843 Center Port Circle, Pompano Beach, Florida 33064 USA  
Toll Free: 800-331-4675 • Direct: 954-426-2965 • Fax: 954-426-8389  
[www.sentecheas.com](http://www.sentecheas.com)



**0400-0105**

**INSERT, AD PANEL FOR G2 SYSTEMS, CLEAR, FROSTED**

Replacement AD panel for G2 systems



Specifications subject to change without notice

2843 Center Port Circle, Pompano Beach, Florida 33064 USA  
Toll Free: 800-331-4675 • Direct: 954-426-2965 • Fax: 954-426-8389  
[www.sentecheas.com](http://www.sentecheas.com)





**0500-0160-01**

**DIAMOND BLADE, 4" (102MM), DEWALT. USE WITH DWC860Q**



Specifications subject to change without notice

2843 Center Port Circle, Pompano Beach, Florida 33064 USA  
Toll Free: 800-331-4675 • Direct: 954-426-2965 • Fax: 954-426-8389  
[www.sentecheas.com](http://www.sentecheas.com)

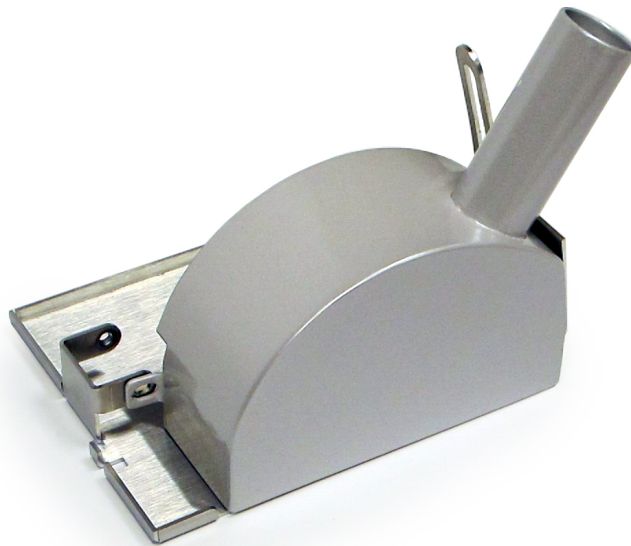


## V-SHROUD

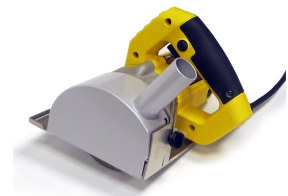
### VACUUM SHROUD ATTACHMENT KIT

Vacuum shroud fits on a Dewalt DWC860W tile saw and is connected to a shop vacuum to prevent dust while cutting floors. No saw modifications are required. Stainless steel base and powder coated steel vacuum housing. Kit includes all necessary assembly hardware.

Saw and diamond blades are not included.



Base and Shroud



Dewalt Saw not included

Specifications subject to change without notice

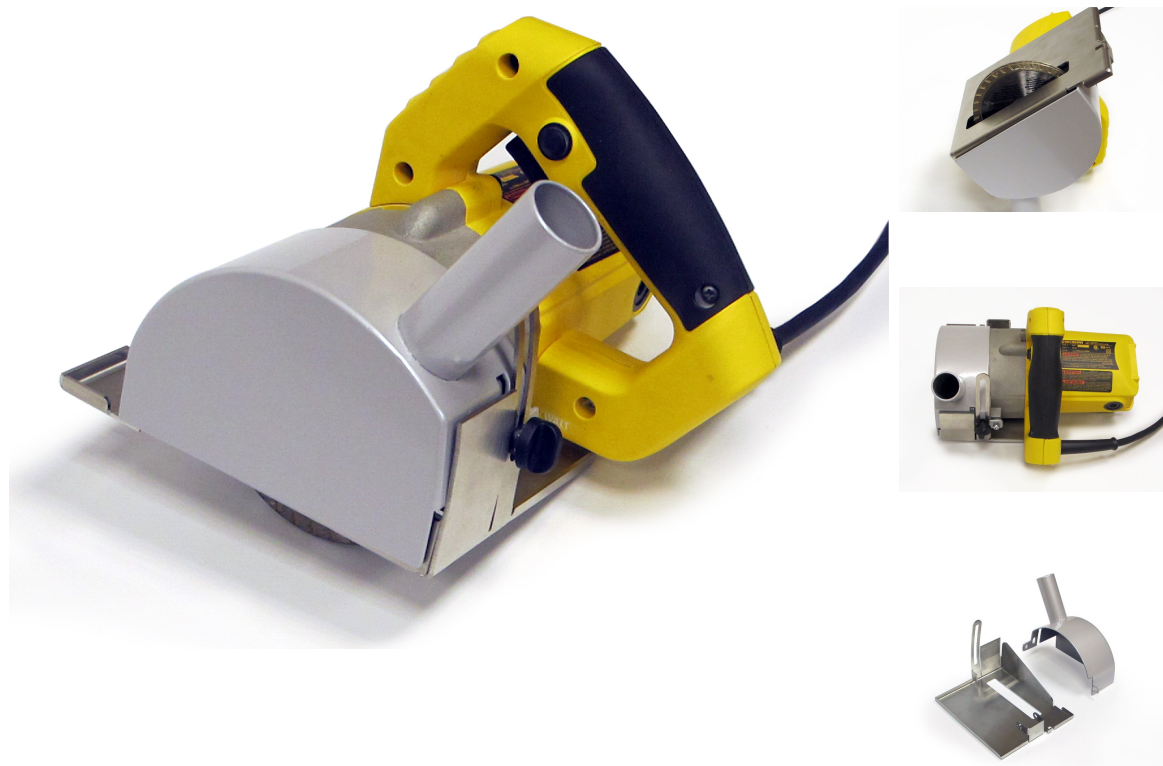
2843 Center Port Circle, Pompano Beach, Florida 33064 USA  
Toll Free: 800-331-4675 • Direct: 954-426-2965 • Fax: 954-426-8389  
[www.sentecheas.com](http://www.sentecheas.com)



## DWC860W-VS

### DEWALT DWC860W TILE SAW WITH SENTECH'S V-SHROUD VACUUM ATTACHMENT

Dewalt DWC860W tile saw with SenTech's V-Shroud vacuum attachment. When connected to a shop vacuum the shroud prevents dust while cutting floors. No saw modifications are required. Includes a Stainless steel base and powder coated steel vacuum housing. Kit includes all hardware. Saw comes fully assembled, includes two blades. One Year warranty on SenTech V-Shroud attachment only. DWC860W tile saw warranty from Dewalt.



Specifications subject to change without notice

2843 Center Port Circle, Pompano Beach, Florida 33064 USA  
Toll Free: 800-331-4675 • Direct: 954-426-2965 • Fax: 954-426-8389  
[www.sentecheas.com](http://www.sentecheas.com)



## **STC929**

### **BUMPER GUARD, 36" TALL, STAINLESS STEEL, REV. A**

Heavy duty formed stainless steel flange mounted guard used to protect SenTech door antenna, or other pedestal type systems from damage from shopping carts.

Includes installation kit.



Specifications subject to change without notice

2843 Center Port Circle, Pompano Beach, Florida 33064 USA  
Toll Free: 800-331-4675 • Direct: 954-426-2965 • Fax: 954-426-8389  
[www.sentecheas.com](http://www.sentecheas.com)

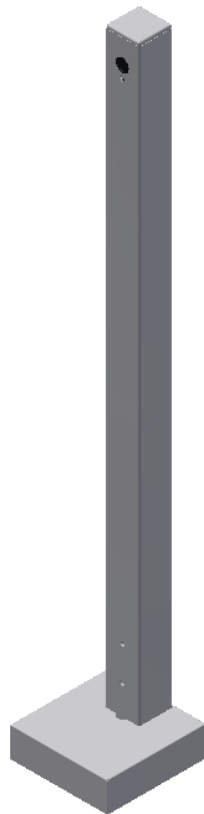


## STC930

### **BUMPER POST, 36" TALL, BLACK, WITH CAMERA, REV. A**

Heavy duty steel flange mounted post with covert high resolution 2 MP IPCamera. The Axis P1245 IP camera provides excellent views directly in the exit path allowing facial recognition. The post also provides protection of SenTech or other pedestal type systems from damage due to shopping carts, strollers etc. Post includes, camera, USB interconnect cable, POE adapter and mounting hardware. • Requires CAT5 cable run to POE network switch or NVR - not included.

May be installed directly against the door frame or sliding doors.



AXIS P1245

Specifications subject to change without notice

2843 Center Port Circle, Pompano Beach, Florida 33064 USA  
Toll Free: 800-331-4675 • Direct: 954-426-2965 • Fax: 954-426-8389  
[www.sentecheas.com](http://www.sentecheas.com)



## **KT117**

### **KIT, INSTALL G2 AM SYSTEMS - INCLUDES WIREMOLD**

Installation materials for installing G2 systems - includes wiremold

Photo Not  
Available

Specifications subject to change without notice

**2843 Center Port Circle, Pompano Beach, Florida 33064 USA**  
**Toll Free: 800-331-4675 • Direct: 954-426-2965 • Fax: 954-426-8389**  
**[www.sentecheas.com](http://www.sentecheas.com)**



## **KT116**

### **INSTALL KIT, SINGLE AISLE G2 SYSTEMS**

Installation kit for SenTech G2 systems. Includes the parts necessary for anchoring and cable connections.

Photo Not  
Available

Specifications subject to change without notice

**2843 Center Port Circle, Pompano Beach, Florida 33064 USA**  
**Toll Free: 800-331-4675 • Direct: 954-426-2965 • Fax: 954-426-8389**  
**[www.sentecheas.com](http://www.sentecheas.com)**



## KT118-01

### KIT, SINGLE DOOR ANTENNA, GLASS INSTALLATION

VHB tape kit used to mount a single door antenna to glass or polished stone. Tape is applied to back surface of the door antenna mounting bracket. Does not require any other mounting hardware.

Note: This kit installs only One antenna.



Specifications subject to change without notice

2843 Center Port Circle, Pompano Beach, Florida 33064 USA  
Toll Free: 800-331-4675 • Direct: 954-426-2965 • Fax: 954-426-8389  
[www.sentecheas.com](http://www.sentecheas.com)





**0400-0072**

**WIREMOLD KIT, WHITE PLASTIC, CORDMATE II, #C210**

Especially suited for covering home entertainment wires, speaker cables, TV/video cabling and home office wiring. Organize and hide cords and cables easily. Self-adhesive backing makes for easy installation.



Specifications subject to change without notice

2843 Center Port Circle, Pompano Beach, Florida 33064 USA  
Toll Free: 800-331-4675 • Direct: 954-426-2965 • Fax: 954-426-8389  
[www.sentecheas.com](http://www.sentecheas.com)



**0400-0053**

**WIREMOLD FLEXIBLE PANCAKE MOLDING, 1200 SERIES GRAY 5' LENGTH**

Light gray plastic wire mold used to cover power cable for EAS systems, computer cables, mounted on floor surface. Standard 5' length with double sided tape.



QuickTime<sup>®</sup> and a  
TIFF (Uncompressed) decompressor  
are needed to see this picture.

1200 Series

Specifications subject to change without notice

2843 Center Port Circle, Pompano Beach, Florida 33064 USA  
Toll Free: 800-331-4675 • Direct: 954-426-2965 • Fax: 954-426-8389  
[www.sentecheas.com](http://www.sentecheas.com)



**0400-0035**

**WIREMOLD #1585, 3 1/4" COMBINATION CONNECTOR**

Straight fitting used with 1500 series Wire Mold brand floor molding to enter into walls from molding on the floor. Made from galvanized steel. Includes cover screw. Installed using plastic anchors or Tapcons® not included.



Specifications subject to change without notice

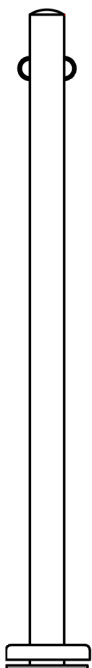
2843 Center Port Circle, Pompano Beach, Florida 33064 USA  
Toll Free: 800-331-4675 • Direct: 954-426-2965 • Fax: 954-426-8389  
[www.sentecheas.com](http://www.sentecheas.com)



**0500-0088-01**

**GUIDE POST, FOR CHAIN, SS, 1.90 DIA X 36" MIRROR FINISH**

Heavy duty stainless steel flange mounted post used to close off wide aisle openings with the use of plastic chain to a fixed location. SenTech or other pedestal type systems can be attached to these posts.



Specifications subject to change without notice

2843 Center Port Circle, Pompano Beach, Florida 33064 USA  
Toll Free: 800-331-4675 • Direct: 954-426-2965 • Fax: 954-426-8389  
[www.sentecheas.com](http://www.sentecheas.com)

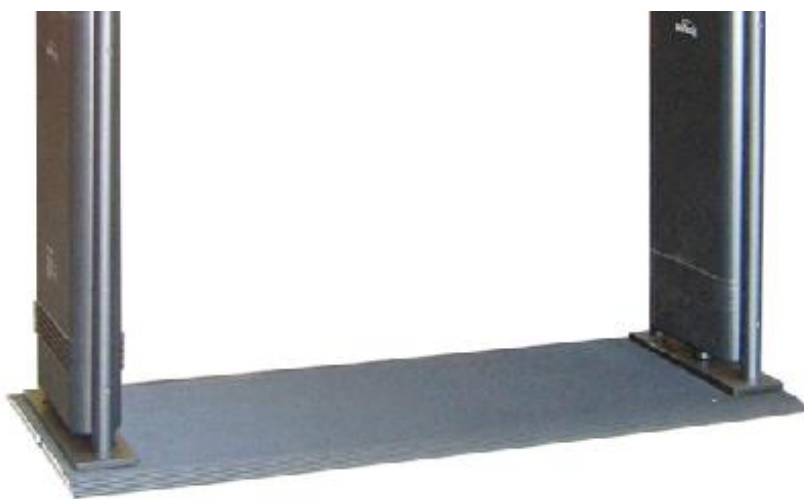


## STC700

### BASE PLATE ASSY, 36"

Allows easy end user installation of SenTech systems at 36 inch system centerline dimensions. Aluminum base plate is covered with black ez-clean non-slip material and comes pre-wired with plug-in connectors. Simply bolt pedestals to plate and plug into an AC outlet.

\*Defender system (shown) sold separately.



Pre-Wired For Antennas



Plug-In Connectors

Specifications subject to change without notice

2843 Center Port Circle, Pompano Beach, Florida 33064 USA  
Toll Free: 800-331-4675 • Direct: 954-426-2965 • Fax: 954-426-8389  
[www.sentecheas.com](http://www.sentecheas.com)

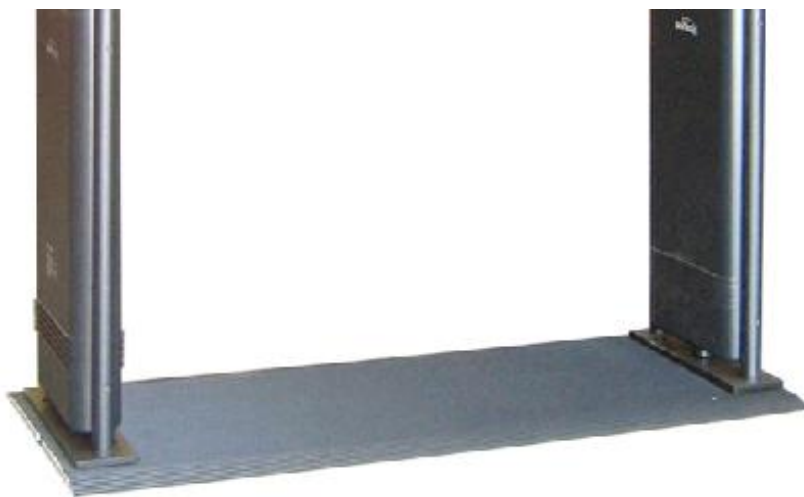


## STC700-22

### BASE PLATE ASSY, UNIVERSAL 39" X 22' WIDE

Allows easy end user installation of SenTech systems at 36 inch system centerline dimensions. Aluminum base plate is covered with black ez-clean non-slip material and comes pre-wired with plug-in connectors. Simply bolt pedestals to plate and plug into an AC outlet.

\*Defender system (shown) sold separately.



Pre-Wired For Antennas



Plug-In Connectors

Specifications subject to change without notice

2843 Center Port Circle, Pompano Beach, Florida 33064 USA  
Toll Free: 800-331-4675 • Direct: 954-426-2965 • Fax: 954-426-8389  
[www.sentecheas.com](http://www.sentecheas.com)



## STC702

### BASE PLATE UNIVERSAL 72" X 16" WIDE

Allows easy end user installation of single aisle or dual aisle SenTech systems at 36 or 72 inch system centerline dimensions. Aluminum base plate is covered with black ez-clean non-slip vinyl material and comes pre-wired with plug-in connectors. Simply bolt pedestals to plate and plug into an AC outlet.

\*Defender system (shown) sold separately.



Pre-Wired For Antennas



Plug-In Connectors

Specifications subject to change without notice

2843 Center Port Circle, Pompano Beach, Florida 33064 USA  
Toll Free: 800-331-4675 • Direct: 954-426-2965 • Fax: 954-426-8389  
[www.sentecheas.com](http://www.sentecheas.com)



## **KT118**

### **KIT, INSTALL G2 DOOR ANTENNA**

Installation materials for installing G2 Door systems. One kit is used for two antennas.

Photo Not  
Available

Specifications subject to change without notice

**2843 Center Port Circle, Pompano Beach, Florida 33064 USA**  
**Toll Free: 800-331-4675 • Direct: 954-426-2965 • Fax: 954-426-8389**  
**[www.sentecheas.com](http://www.sentecheas.com)**





## **STC5820-M**

### **MOUNTING BRACKET, DOOR ANTENNA, GREY, HARDWARE NOT INCLUDED**

Door mounting bracket for SenTech's AM Door antennas. Installed using screws or VHB tape to mount on wall, door frames or windows.



Specifications subject to change without notice

2843 Center Port Circle, Pompano Beach, Florida 33064 USA  
Toll Free: 800-331-4675 • Direct: 954-426-2965 • Fax: 954-426-8389  
[www.sentecheas.com](http://www.sentecheas.com)



## STC702-22

### BASEPLATE ASSEMBLY, UNIVERSAL 72" X 22" WIDE

Allows easy end user installation of single aisle or dual aisle SenTech systems at 36 or 72 inch system centerline dimensions. Aluminum base plate is covered with black textured non-slip material and comes pre-wired with plug-in connectors. Simply bolt pedestals to plate and plug into an AC outlet.

\*Defender system (shown) sold separately.



Pre-Wired For Antennas



Plug-In Connectors

Specifications subject to change without notice

2843 Center Port Circle, Pompano Beach, Florida 33064 USA  
Toll Free: 800-331-4675 • Direct: 954-426-2965 • Fax: 954-426-8389  
[www.sentecheas.com](http://www.sentecheas.com)



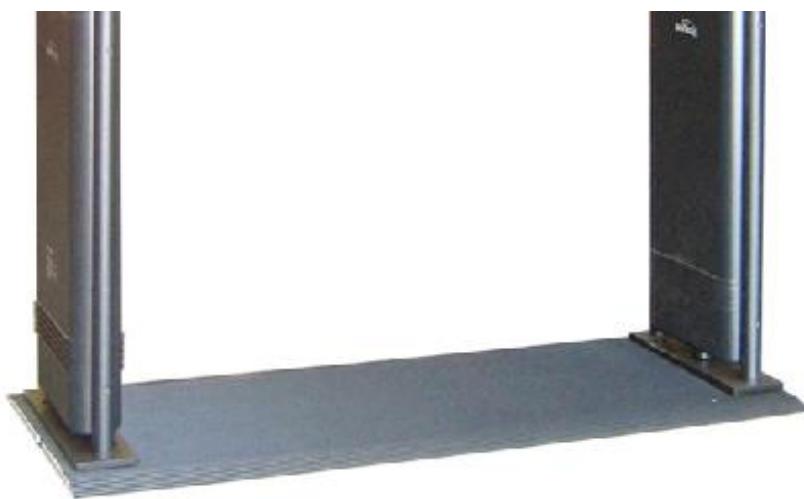
## STC700-R

### BASE PLATE ASSY, 36", **REFURB**

Allows easy end user installation of SenTech systems at 36 inch system centerline dimensions. Aluminum base plate is covered with black ez-clean non-slip material and comes pre-wired with plug-in connectors. Simply bolt pedestals to plate and plug into an AC outlet.

Previously owned and refurbished

\*Defender system (shown) sold separately.



Pre-Wired For Antennas



Plug-In Connectors

Specifications subject to change without notice

2843 Center Port Circle, Pompano Beach, Florida 33064 USA  
Toll Free: 800-331-4675 • Direct: 954-426-2965 • Fax: 954-426-8389  
[www.sentecheas.com](http://www.sentecheas.com)



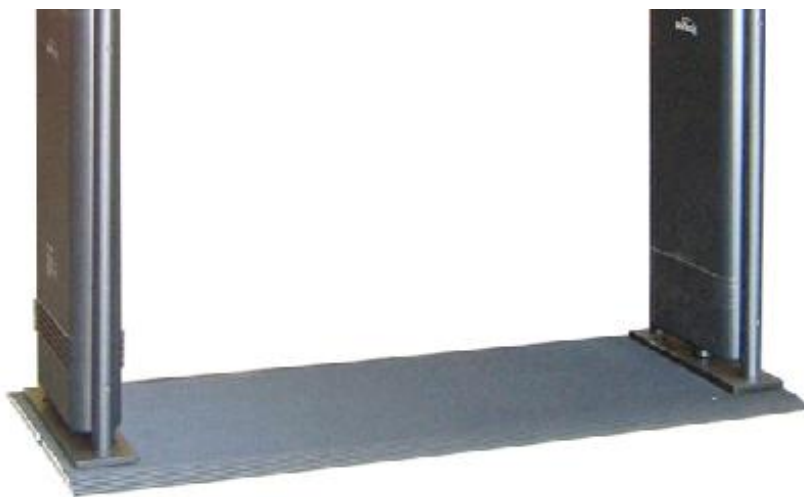
## STC700-22-R

**BASE PLATE ASSY, UNIVERSAL 39" X 22' WIDE, *REFURB***

Allows easy end user installation of SenTech systems at 36 inch system centerline dimensions. Aluminum base plate is covered with black ez-clean non-slip material and comes pre-wired with plug-in connectors. Simply bolt pedestals to plate and plug into an AC outlet.

Previously owned and refurbished

\*Defender system (shown) sold separately.



Pre-Wired For Antennas



Plug-In Connectors

Specifications subject to change without notice

2843 Center Port Circle, Pompano Beach, Florida 33064 USA  
Toll Free: 800-331-4675 • Direct: 954-426-2965 • Fax: 954-426-8389  
[www.sentecheas.com](http://www.sentecheas.com)



## STC702-R

**BASE PLATE UNIVERSAL 72" X 16" WIDE, *REFURB***

Allows easy end user installation of single aisle or dual aisle SenTech systems at 36 or 72 inch system centerline dimensions. Aluminum base plate is covered with black ez-clean non-slip vinyl material and comes pre-wired with plug-in connectors. Simply bolt pedestals to plate and plug into an AC outlet.



Specifications subject to change without notice

2843 Center Port Circle, Pompano Beach, Florida 33064 USA  
Toll Free: 800-331-4675 • Direct: 954-426-2965 • Fax: 954-426-8389  
[www.sentecheas.com](http://www.sentecheas.com)



## STC702-22-R

### BASE PLATE UNIVERSAL 72" X 22" WIDE, **REFURB**

Allows easy end user installation of single aisle or dual aisle SenTech systems at 36 or 72 inch system centerline dimensions. Aluminum base plate is covered with black textured non-slip material and comes pre-wired with plug-in connectors. Simply bolt pedestals to plate and plug into an AC outlet.

Previously owned and re-furbered

\*Defender system (shown) sold separately.



Pre-Wired For Antennas



Plug-In Connectors

Specifications subject to change without notice

2843 Center Port Circle, Pompano Beach, Florida 33064 USA  
Toll Free: 800-331-4675 • Direct: 954-426-2965 • Fax: 954-426-8389  
[www.sentecheas.com](http://www.sentecheas.com)



**6000-0054**

**CABLE, CAT5, WHITE, 1,000 FOOT BOX**

Bulk spool of CAT5 network cable use to run network connections.



Specifications subject to change without notice

2843 Center Port Circle, Pompano Beach, Florida 33064 USA  
Toll Free: 800-331-4675 • Direct: 954-426-2965 • Fax: 954-426-8389  
[www.sentecheas.com](http://www.sentecheas.com)



**0400-0073**

**ELECTRICAL OUTLET SHIELD, SINGLE GANG**

Electrical outlet shield, single gang size. Used to protect an outlet from tampering when an EAS alarm system is in use. Weatherproof.



Specifications subject to change without notice

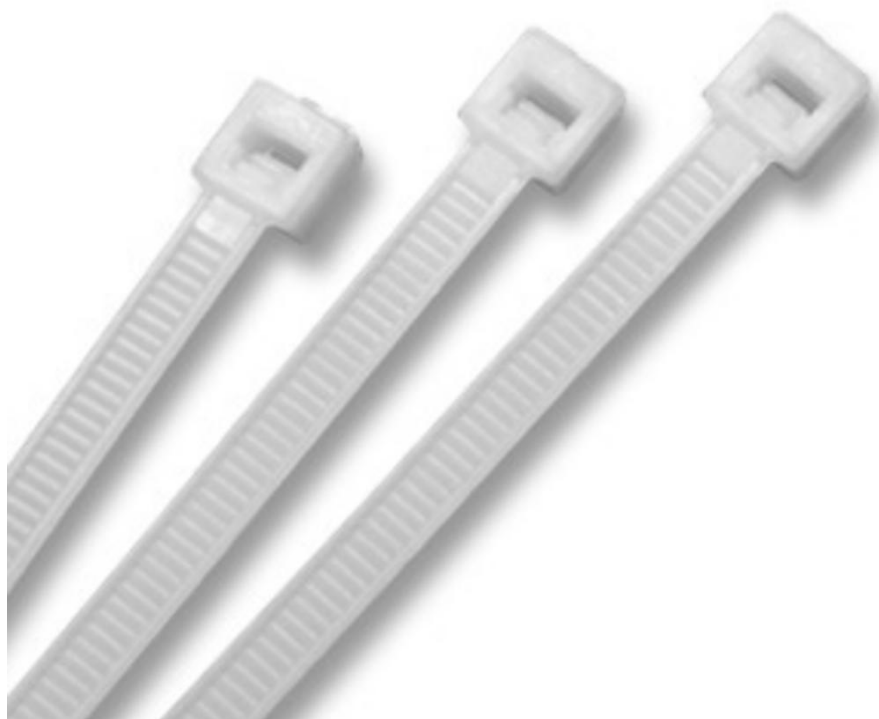
2843 Center Port Circle, Pompano Beach, Florida 33064 USA  
Toll Free: 800-331-4675 • Direct: 954-426-2965 • Fax: 954-426-8389  
[www.sentecheas.com](http://www.sentecheas.com)





**2841-0236**

**TIE WRAP NATURAL/WHITE COLOR 6". 1000 PCS PER BAG**



Specifications subject to change without notice

**2843 Center Port Circle, Pompano Beach, Florida 33064 USA**  
**Toll Free: 800-331-4675 • Direct: 954-426-2965 • Fax: 954-426-8389**  
**[www.sentecheas.com](http://www.sentecheas.com)**



## P1245

CAMERA, AXIS# P1245 NETWORK CAMERA, DISCREET HDTV 1080P



Specifications subject to change without notice

2843 Center Port Circle, Pompano Beach, Florida 33064 USA  
Toll Free: 800-331-4675 • Direct: 954-426-2965 • Fax: 954-426-8389  
[www.sentecheas.com](http://www.sentecheas.com)



## **6000-0056**

### **CABLE, WHITE, 22/2 STR UNSHIELDED 500'**

Two conductor twisted pair cable used for interconnecting power and slaving or (synchronizing) systems. White PVC outer jacket, wire is twisted 20 AWG black and red pair, stranded and zinc plated.



Specifications subject to change without notice

**2843 Center Port Circle, Pompano Beach, Florida 33064 USA**  
**Toll Free: 800-331-4675 • Direct: 954-426-2965 • Fax: 954-426-8389**  
**[www.sentecheas.com](http://www.sentecheas.com)**

# SENTECH

## RBST

### ALTRONIX RBST RELAY

RBST relay module is designed for continuous duty. This rugged, reliable and dependable relay will handle any switching application.

Input 6VDC, 12VDC, or 24VDC. 30 mA draw current



Specifications subject to change without notice

2843 Center Port Circle, Pompano Beach, Florida 33064 USA  
Toll Free: 800-331-4675 • Direct: 954-426-2965 • Fax: 954-426-8389  
[www.sentecheas.com](http://www.sentecheas.com)



## **6000-0026**

### **CABLE, 2 COND. TWISTED PAIR, 18 AWG, 500 FT**

Two conductor twisted pair cable used for interconnecting power and slaving or (synchronizing) systems. Gray PVC outer jacket, wire is twisted 20 AWG black and red pair, stranded and zinc plated.



Specifications subject to change without notice

**2843 Center Port Circle, Pompano Beach, Florida 33064 USA**  
**Toll Free: 800-331-4675 • Direct: 954-426-2965 • Fax: 954-426-8389**  
**[www.sentecheas.com](http://www.sentecheas.com)**